



wunan®
Choose your future



2025

Annual Report



Acknowledgement of Country

Wunan Foundation acknowledges the Traditional Owners of Country throughout Australia and acknowledges their continuing connection to land, waters and community. We pay our respects to the people, the cultures and Elders past and present.

Please note: Aboriginal and Torres Strait Islander people should be aware that this document may contain images or names of deceased persons in photographs or printed material.



About Wunan Foundation

Wunan is a not-for-profit Aboriginal organisation based in the East Kimberley region of Western Australia.

Its purpose is to ensure that Aboriginal people in the East Kimberley enjoy the capabilities and opportunities they need to make positive choices that lead to independent and fulfilling lives. Essentially, to have dreams and a real chance of achieving them. Since its inception in 1997, Wunan has developed many successful and mutually beneficial partnerships.

These allow us to deliver key programs and reforms that focus on education, health, leadership, housing, employment and commercial ventures. We thank the many organisations that have supported Wunan in 2025. They have made it possible for us to continue working hard to achieve our goals and mission.



Contents

Acknowledgement of Country	2	Meaningful Employment	
About Wunan Foundation	3	Journey to Empowerment	42
Our Vision, Purpose, Values and Strategic Pillars	6	Still On Track.....	44
Message from the Chair	8	Jobs and Skills Centre	46
Message from the CEO	10	Job Pathways - A Strategic Employment Partnership	47
Board of Directors	12		
Strategic Enabler		Connected Health	
People, Processes and Systems	18	Wunan Health and Wellbeing Centre	48
		headspace Kununurra	50
Empowered Leadership		Kununurra Withdrawal Intervention Centre (KWIC)	51
Bedford Downs Stock Route Walk	20	Integrated Care and Allied Health Program	53
Governance and Leadership	22	Disability Advocacy Program	55
Kununurra Youth Night Space (KYNS) Co-Design Project.....	23		
2025 Close the Gap Report - Case Study.....	24	Accessible Housing	
2025 East Kimberley Aboriginal Achievement Awards (EKAAAs).....	25	Strengthening Workforce Through Secure Housing	56
		Pathways to Home Ownership (PTHO)....	57
		KNX Community Hostel	60
Education for Lifelong Learning			
Early Years and Family Support Services.....	28	Commercially Sustainable	
Home Interaction Program for Parents and Youngsters (HIPPY).....	29	Lily Lagoon Resort.....	62
Garndim-banjelng Badang Yarrowoo Menewoolbtha Children’s Service	30	Wunan Maintenance Services (WMS).....	65
Kimberley Education Excellence Program (KEEP).....	31	iBase	66
Talent Pool Academy	33	Wunan Media	68
Target 120	35	Property Development	70
Wunan Driver Training Program.....	37		
Kununurra Study Hub.....	39	Partnerships 2025	72
Financial Hub	40	Sponsorships 2025	74
Halls Creek Education and Attainment Initiative (HCEAI)	41	Financials.....	76



Our Vision, Purpose, Values and Strategic Pillars

Our Vision

We will empower Aboriginal people by creating sustainable opportunities and achieving measurable progress on Closing the Gap targets in the East Kimberley.

Our Mission

We will support the empowerment of East Kimberley Aboriginal people through our social enterprises and services.

Our Values - The Wunan Way



Culturally Respectful

We honour our heritage and traditions, ensuring that respect for our history and identity shapes our actions.



Accountable

We commit to transparency and integrity, taking responsibility for our actions and their impact on our communities.



Empathetic

We prioritise understanding and responding to the needs of the people we serve with compassion and care.



Empowering

We enable individuals to take control of their lives by providing opportunities that foster independence and growth.



Collaborative

We build strong partnerships, working together to achieve shared goals, to create lasting and transformative impact.

Strategic Pillars



Empowered Leadership

Empowering Indigenous leadership, driving policy reform and building partnerships to create a sustainable, self-determined future in the East Kimberley through culturally sensitive service delivery and long-term impact.



Education for Lifelong Learning

Enhancing education to create a culturally responsive environment that fosters lifelong learning and economic independence for Indigenous students.



Meaningful Employment

Creating pathways that transition individuals from welfare to meaningful employment, supporting young people entering the workforce and advocating for greater Aboriginal participation across all industries.



Connected Health

Leading the Health sector in East Kimberley by integrating primary and preventative healthcare, creating culturally safe services, fostering strategic partnerships and establishing financially sustainable connected healthcare models.



Accessible Housing

Empowering Indigenous communities, reducing welfare reliance and fostering long-term financial stability through the development of sustainable housing solutions.



Commercially Sustainable

Driving economic sustainability and fostering economic self-sufficiency and entrepreneurship, while also establishing a media and communications enterprise to amplify Indigenous voices and issues.

Message from the Executive Chair Ian Trust



It is my pleasure to present this report and to reflect on the work Wunan Foundation has undertaken over the past year. It has been a year of significant progress, ongoing challenge and, importantly, growing opportunity as we continue our mission to empower Aboriginal people in the East Kimberley to build strong, independent lives.

Wunan's work remains firmly anchored in the national Closing the Gap framework and in our new 2025-2030 Strategic Plan, which focuses on education, employment, housing, health, leadership, commercial enterprise and advocacy. Across these areas we are seeing practical results. In early childhood, the establishment of the Garndim-banjelng Badang Yarrowoo Menewoolbtha Children's Service, delivered in partnership with One Tree Community Services and MG Corporation, together with our Children and Parents' Centres, is increasing access to quality early learning for local children and families.

In education, programs such as KEEP are working directly with students, families and schools to support attendance and encourage more young people to complete Year 12. Youth initiatives including the Bedford Stock Route Walk, Still on Track, and consultations for the Kununurra Youth Night Space (KYNS) are giving our young people safe spaces, positive experiences and a stronger sense of identity and aspiration for the future.

Employment and economic participation remain central to Wunan's mission. Through Job Pathways and our workforce

development programs, large numbers of Aboriginal jobseekers have connected with training and work across sectors such as construction, pastoral, health, aged care and hospitality. Our own enterprises, including Wunan Maintenance Service and Lily Lagoon Resort, are creating real jobs and entry-level pathways, and we continue to build partnerships that will strengthen long-term employment outcomes.

We have also invested in health, wellbeing and housing, the foundations of a stable life. The completion of the Kununurra Withdrawal and Intervention Centre, the ongoing operation of headspace, and the review of the Wunan Health & Well-Being Centre are all aimed at improving mental health and allied health support for our community. Our hostel in Kununurra, in partnership with MG Corporation, and the construction of six new units under the North-West Aboriginal Housing Fund (NWAHF) will help to ease overcrowding and give more people a secure base from which to study, work and raise their families.

Strong governance and partnerships underpin all of this work. Building on the Stronger ACCOs, Stronger Families project, we have continued to embed Aboriginal

leadership in program design and decision-making, and to work closely with local organisations to co-design services. During the year we welcomed a number of senior State and Federal representatives to Kununurra, using these visits to highlight local priorities and advocate for more practical, place-based solutions. We also marked important milestones such as the East Kimberley Aboriginal Achievement Awards and the establishment of Wunan Media to share our stories and impact.

At the heart of our work is a belief in personal responsibility, and in empowering Aboriginal people to take full advantage of the opportunities available across the region. Wunan will continue to advocate

for systemic change to address key issues of national importance and advocate for reform at the highest levels of government.

I want to thank our board, CEO and leadership team, our staff, funders, partners and community for their commitment to this vision. I also particularly acknowledge the passing of Mr Birch and his enduring legacy as a leader and advocate for his people and for the East Kimberley.

Our journey continues, and we remain steadfast in our belief that Aboriginal families and communities in this region can and will build lives of purpose, security and opportunity.



Message from the
Chief Executive Officer
Prue Jenkins



I am delighted to present the 2025 Annual Report for the Wunan Foundation. 2025 has been one of Wunan's biggest years yet. It has been inspiring to reflect on what our teams have delivered across the East Kimberley, and the difference that work is making on the ground. From strengthening early childhood and family services, to supporting positive pathways for young people, and progressing housing and health initiatives, this year has been shaped by strong partnerships and a shared commitment to community-led outcomes.

A major milestone this year was the development of the Garndim-banjelng Badang Yarrowoo Menewoolbtha Children's Service, established with MG Corporation and One Tree Community Services, reinforcing our commitment to culturally strong early childhood and family support.

Youth programs also remained a key focus. Highlights included the Bedford Stock Route Walk, alongside the completion of co-design consultations for the Kununurra Youth Night Space, delivered in collaboration with Kununurra-Waringarri Aboriginal Corporation (KWAC) and MG Corporation. With planning and consultation concluded, the Night Space is progressing toward opening in 2026. We also launched Still On Track, funded through the WA Government's Criminal Property Confiscation Grants Program, to support at-risk Aboriginal young people to become engaged and transition to a positive path.

Across our commercial operations, Lily Lagoon Resort continued its transformation into a vibrant Indigenous training and employment hub for local people,

supported through investment from the Department of Social Services, the Indigenous Land and Sea Council (ILSC), for significant renovation works and NIAA for the Jobs Trial and the Remote Jobs and Economic Development Program for training and employment.

Housing outcomes remained central to enabling education, training and employment pathways. During 2025, our Kununurra hostel accommodation service supported 133 people, providing a safe and stable base while they studied, trained or worked. Through the North-West Aboriginal Housing Fund, we also secured funding for six new units, now progressing toward completion, which will help reduce overcrowding and housing stress for local families.

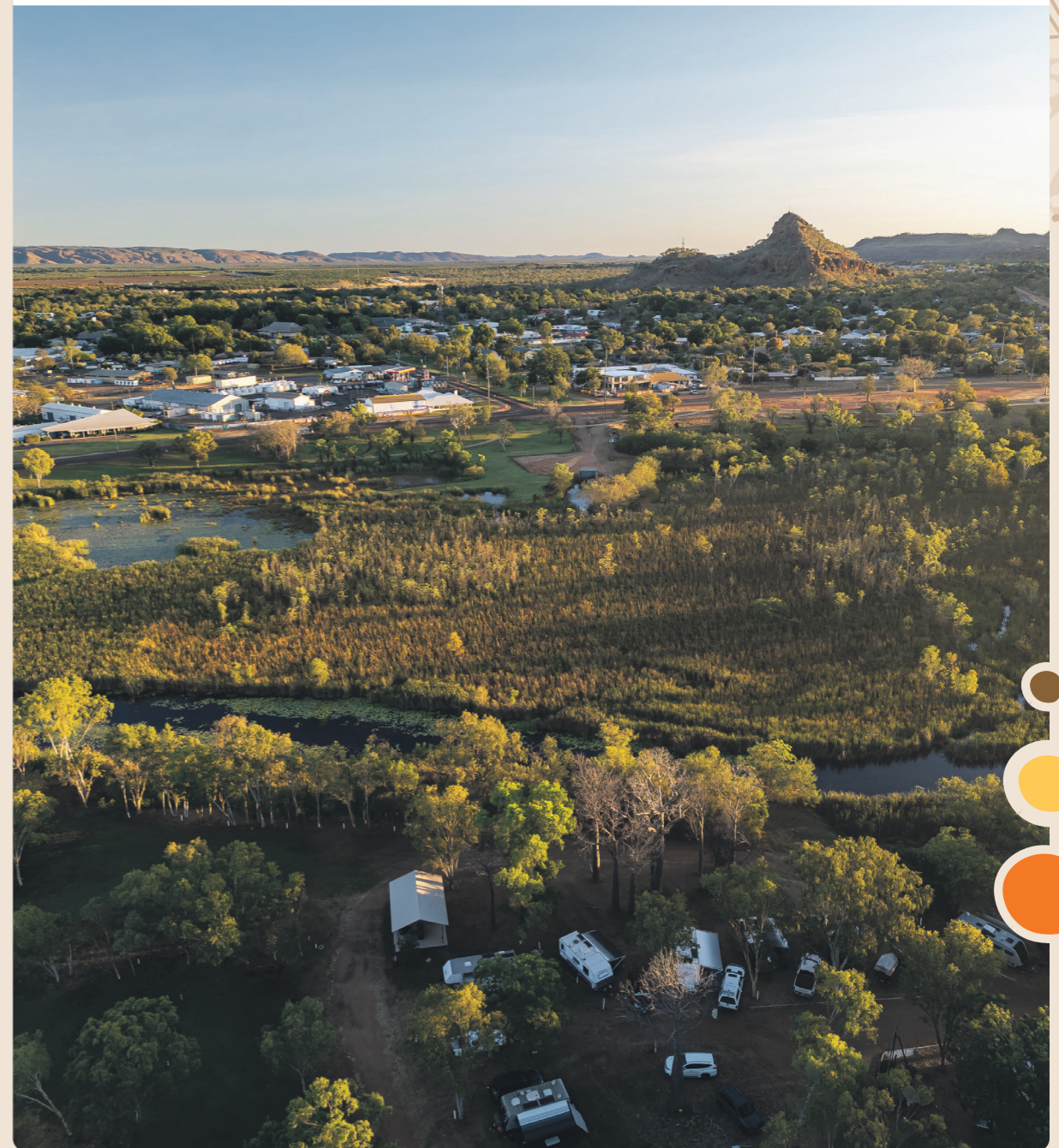
We also marked a significant achievement in regional health services with the opening of the Kununurra Withdrawal Intervention Centre (KWIC), providing culturally respectful withdrawal support and treatment in a safe environment. KWIC is Western Australia's first Aboriginal community-controlled low-medical

withdrawal service. Alongside this, planning progressed for the next stage of Wunan Health's service delivery, with an Allied Health program launched from January 2026 to improve access to local, community-focused care for people living with chronic and complex conditions.

Community celebration and recognition remained an important part of our work. Wunan was proud to host the East Kimberley Aboriginal Achievement Awards, bringing the region together to recognise leadership, strength and excellence. We also welcomed State and Federal leaders to Kununurra throughout the

year, providing opportunities to showcase the priorities of the East Kimberley and advocate for more effective and sustainable, place-based approaches to funding and service delivery.

Across every program area, I acknowledge the commitment of our staff, the guidance of our Board, and the ongoing support of our partners and funders. Most importantly, I recognise the determination of the families and communities we work alongside every day. Wunan remains committed to creating opportunities and strengthening outcomes for Aboriginal people across the East Kimberley.



Board of Directors



Ian Trust AO - Executive Chair

A Gija man from Wuggubun Community, Ian Trust is a visionary leader dedicated to creating a future beyond welfare dependency for Aboriginal people in the East Kimberley. Fluent in English and Kriol, he has been instrumental in driving economic empowerment, sustainable development, and community-led progress since Wunan's inception in 1997, serving as Executive Chair since 2004.

Ian's leadership extends beyond Wunan, with a long history of influence in national and regional organisations, including the Indigenous Land Corporation and the Kimberley Development Commission. As Chair of the national Empowered Communities Group, he is committed to nurturing emerging Aboriginal leaders and ensuring Aboriginal communities have a strong voice in shaping their own future.

His extensive governance experience has included leadership roles as:

- Founding Chairman, Wunan Foundation (1997-2003)
- Chair - Empowered Communities
- Board Member, Job Pathways
- Board Member, CASWA
- Chairman & Director, Indigenous Business Australia (IBA)
- Board Member, Indigenous Land Corporation (ILC)
- Board Member, Aarnja (West Kimberley)
- Board Member, North Regional TAFE
- ATSIIC Commissioner (Kimberley) & Chair, Wunan ATSIIC Regional Council
- Appointed an Officer of the Order of Australia (AO) in the 2021

Throughout his career, Ian has championed key reforms in Aboriginal housing, infrastructure, and economic participation, leading groundbreaking initiatives such as the ATSIIC Regional Council's "Future Building" strategy (1996) and [PJ1] the East Kimberley Aboriginal Achievement Awards. His work continues to drive systemic change and unlock opportunities for Aboriginal people across the region.



Jamie Elliott - Deputy Chair

Jamie Elliott is a highly respected leader with extensive experience in Aboriginal health, housing, education, sports, and community engagement. With a deep commitment to strengthening Aboriginal communities in Western Australia, Jamie brings both hands-on expertise and a strategic, big-picture perspective to his work.

His leadership spans multiple sectors, where he has played a pivotal role in driving positive change. As a Director on the Wunan Board, Jamie is dedicated to leveraging his business acumen and community insight to create meaningful, long-term impact. He is passionate about providing strong governance, strategic direction, and culturally informed leadership to advance opportunities for Aboriginal people.

Jamie was a founding house parent of Wunan's Dural Education Excellence Program, reflecting his commitment to supporting young people in achieving educational success.

His governance experience includes directorial roles with:

- Highways Traffic Kimberley & Cornerstone Resourcing
- Aboriginal Lands Trust
- Tjurabalan Native Title Aboriginal Corporation (Former Deputy Chair)
- Board Member, Job Pathways
- Advisory Board Member, Aboriginal Business, Trade and Investment

Through his leadership, Jamie continues to advocate for sustainable solutions that empower Aboriginal communities and drive social and economic progress

Late in 2025, we farewelled our long-term Deputy Chair, Jamie Elliott, who has made a significant contribution to the Foundation over his tenure. We wish Jamie continued success in his next ventures.



Jean O'Reeri - Director

Jean O'Reeri is a respected Willingjin woman from Karunjie Station on the Gibb River Road, with deep roots in the East Kimberley region. She has lived and worked in Wyndham since the 1960s, dedicating over two decades to education as an Aboriginal teaching assistant, most recently supporting early childhood learning at St. Joseph's School.

Jean brings extensive governance experience, having served as a director of the Ngnowar Aerwah Aboriginal Corporation, which delivers vital alcohol and drug rehabilitation services to the community. She is also an active member of the Wyndham Advisory Group, contributing her leadership and cultural insight to community development and advocacy. Jean has also contributed her leadership through respected roles as a Board Member of Binarri-binyja yarrowoo (BBY), a Member of the Aboriginal Justice Advisory Committee (AJAC), and an Aboriginal Teaching Assistant with Catholic Education Western Australia.



Michael Ashforth - Director

Michael Ashforth is a highly accomplished corporate leader with more than 30 years of experience in law, investment banking, and corporate advisory. He has played a pivotal role in some of Australia's most significant and complex mergers and acquisitions, advising both domestic and international clients.

Throughout his distinguished career, Michael has held leadership positions at firms, including:

- Partner, Freehills
- Managing Director, Gresham Partners
- Executive Director, Macquarie Capital
- Executive Chairman, AMB Holdings
- Deputy Chair Northern Star Resources

In addition to his executive roles, Michael has served as a director for multiple private and publicly listed companies and was a Member of the Australian Takeovers Panel for nine years, contributing to corporate governance and regulatory oversight at the highest level.

With deep expertise in corporate strategy, governance, and financial structuring, Michael brings invaluable insight to the Wunan Board, helping drive economic and investment opportunities that create sustainable impact.



Troy Zafer - Director

Troy Zafer is a dynamic leader in the advertising, media, and technology industries, with over 23 years of experience building businesses and managing high-performing teams in Australia and the UK. As the Managing Partner of ZAC Creative, an award-winning production company, Troy has worked with some of the world's leading brands, delivering high-impact TV and online content.

A passionate advocate for equality and opportunity, Troy has played a pivotal role in amplifying Indigenous voices through storytelling. He worked alongside Ian Trust to produce the 'Swimming the River' and 'Pathway to Empowerment' videos, which highlight key challenges and solutions for Aboriginal communities.

Recognising the power of media to drive change, Troy spearheaded the inception of Wunan Media, a new initiative designed to create employment opportunities in media production for people in the East Kimberley. His commitment to innovation extends beyond media, as the co-founder and CEO of Aura, a forward-thinking cashback rewards program that integrates investment options with a strong philanthropic focus.

With a proven track record of entrepreneurship, strategic vision, and social impact, Troy brings valuable expertise to the Wunan Board, helping to drive economic empowerment and creative enterprise in the region.



Lexie Trancollino - Director

Lexie is a descendant of the Kija and Karrarjary tribes and a respected leader in Aboriginal employment and community development. As the owner of L.L. Trancollino Consulting, a 100% Aboriginal-owned enterprise, she provides specialised services to support unemployed Aboriginal people into meaningful employment, offering ongoing mentoring and tailored support throughout their journey.

With extensive industry experience in the East Kimberley, Lexie is a Certified ICAT facilitator and has held numerous executive roles across government and community organisations. She holds qualifications in Aboriginal Community Development and Management, as well as Applied Science, bringing a strong strategic and cultural lens to her work in governance and leadership.

Lexie is the Business Owner of Ngarranggarni Civil and Mining and serves as the Chairperson of Jungarni Jutiya, bringing strong leadership and community governance experience to the Wunan Board.



Jeff Gooding - Director

Jeff Gooding brings over 16 years of experience as an Independent Director, working alongside Native Title holders in trust fund investment, social and commercial development. He has extensive expertise in Native Title negotiations, industry partnerships, and driving outcomes that support both economic growth and community prosperity.

A long-standing member of the Australian Institute of Company Directors and a current Justice of the Peace, Jeff has dedicated over 30 years to leadership roles across government and regional development. His career includes service as a WA State Public Servant and a Local Government Councillor. Whilst Chief Executive of the Kimberley Development Commission, he was awarded the Public Service Medal in the Queen's Birthday Honours List for his outstanding leadership in regional development across the Kimberley.

- Board Member, Gumala
- Shire Wyndham East Kimberley - Councillor

Our Executive Team



Prue Jenkins - Chief Executive Officer, Company Secretary and Public Officer

Prue Jenkins is Wunan's CEO, Company Secretary and Public Officer and a highly regarded leader with over 30 years of experience living and working in regional Western Australia, bringing a deep understanding of the priorities and challenges faced by regional communities. Her career has been dedicated to transformative leadership, organisational culture, and empowering people to drive meaningful impact.

Prue has held senior executive roles, including General Manager, CEO, and Director, across the Kimberley, Pilbara, Goldfields, and Wheatbelt, with strong connections to government, industry, and community sectors. Passionate about delivering strategic initiatives, she thrives on collaboration to develop innovative solutions. She currently serves as Company Secretary for Wunan and its subsidiaries EKADC and EKADC Darwin, Director of the Job Pathways Board and past Board Member of the Aboriginal Business, Trade and Investment Advisory Board and is a Graduate of the Australian Institute of Company Directors.



Shan Shanmuganathan - Chief Financial Officer

Shan Shanmuganathan is Wunan's CFO and a highly experienced Chartered Accountant and the longest-serving Chief Financial Officer of the Wunan Foundation, playing a pivotal role in the organisation's growth while ensuring strong financial governance.

His expertise has been instrumental in developing business cases for social enterprises and driving sustainable opportunities for Wunan. His deep financial acumen and strategic insight continue to provide valuable guidance to the Board and Executive team.

Vale Mr Birch

Former Chair and long-serving Director of Wunan Foundation



It is with deep sadness and great respect that we honour the life and legacy of Thomas (Tom) Birch, our Elder, Board Member, and friend.

Mr Birch was a devoted husband, father, grandfather, great-grandfather, and a trusted friend to so many. His life was full of purpose, love, and of service. His passing leaves a deep space in our hearts and across the Kimberley.

For over three decades, Mr Birch was a pillar of Wunan Foundation. As a former Chair and long-serving Director, he was instrumental in shaping not only our organisation, but also the direction and future of Aboriginal advancement in the East Kimberley.

Mr Birch brought knowledge and inspiration to everything he did. He led with strength, patience, humour, and heart. His leadership extended across many organisations, including his service as Chairman and Deputy Chairman of the Kimberley Land Council from 1999 to 2012. He was also a dedicated member of the Kimberley Language Resource Centre and the Kimberley Aboriginal Law and Culture Centre.

During his tenure with Kimberley Land Council, Mr Birch guided the organisation through a period of significant change and achievement, including major milestones in the recognition of Native Title across the Kimberley.

Within his community of Wyndham, Mr Birch was a stalwart - a calm but firm voice of leadership who championed the inclusion of young people in decision-making roles, ensuring the next generation had a seat at the table and a voice in their own future.

Mr Birch dedicated his life to creating real, lasting change, social and economic, for Aboriginal people. He believed deeply in empowering individuals, families, and communities to take control of their futures and to walk forward with pride, strength, and independence. His contribution wasn't just about vision, it was about action.

To Mr Birch's family, we extend our deepest condolences. Mr Birch spoke often and warmly of his family, with great pride and affection. At his core, he was a devoted family man. His loss is deeply felt across our community, and we honour his life and legacy by standing alongside you with respect, strength and care in the months and years ahead.

At Wunan, we will carry his legacy forward, in the work we do, in the way we lead, and in the way we walk alongside our community.

We invite everyone who knew and loved him to honour him in your thoughts, your stories, and your quiet moments.

Rest peacefully Mr Birch.

Strategic Enabler

People, Processes and Systems

Corporate Services

2025 Workforce at a glance:

- 179** Total Employees
- 52%** Aboriginal Torres Strait Islander
- 45%** Not Aboriginal Torres Strait Islander
- 3%** Not Specified (ATSI)
- 58%** Female
- 40%** Male
- 2%** Not Specified

New roles created in 2025:

Wunan Foundation

10

Wunan Health

40

Lily Lagoon Resort

20

Corporate Services supports Wunan's people and programs by strengthening the systems, policies and governance that underpin our day-to-day delivery. With responsibility for Human Resources, Work Health and Safety (WHS) and the Quality Management System (QMS), the team ensures Wunan remains compliant with legislation, aligned with best practice, and well positioned to operate confidently across diverse industries and locations.

In 2025, Corporate Services played a key role in enabling organisational growth, including extensive recruitment to support Wunan's new and expanding programs at Lily Lagoon Resort, the Kununurra Withdrawal Intervention Centre and Wunan Health. The team also progressed the rollout of the LogicQC Quality Assurance System, alongside the implementation and review of core policies to strengthen consistency, accountability and service quality across the organisation.

WHS remained a strong focus throughout the year, with training delivered for WHS Managers, Chief Wardens and Wardens, as well as de-escalation training and evacuation drills to support safe workplaces. The team also continued to strengthen Wunan's risk culture, including facilitating a Board Risk Management Workshop with Caris Consulting and building a clearer picture of workforce capability through a training needs analysis, supporting career pathways, succession planning and ongoing professional development.

Together, these efforts reflect Wunan's commitment to being an employer of choice and a well-governed organisation, supported by robust systems, a safety-first mindset, and a people-centred approach.



Empowered Leadership

Empowering Indigenous leadership, driving policy reform and building partnerships to create a sustainable, self-determined future in the East Kimberley through culturally sensitive service delivery and long-term impact.

Walking Strong: Young Women on the Bedford Downs Stock Route Walk

Walking strong across Gija Country, eight young women from the East Kimberley took part in the second Bedford Downs Stock Route Walk, a Wunan-led justice diversion initiative where cultural mentorship and being on Country open pathways back into positive community, education and social engagement.

Following the success of the inaugural walk with young men the year before, the 2025 program marked an important evolution of the initiative, delivering the Stock Route Walk with an all-girls cohort. This initiative recognised the strength and resilience of young women, and the importance of creating culturally safe spaces for them to reconnect with country, culture and one another.

The walk itself was the result of several months of preparation, relationship-building, and intentional pre-engagement. In the lead-up, participants took part in a series of activities designed to build trust, confidence, and readiness, with a strong focus on kinship and social and emotional wellbeing.

Activities included hiking, swimming, canoeing, caving, boxing, cooking, art therapy, bush medicine, and group yarning circles, alongside confidence-building experiences such as laser tag with the Talent Pool Academy team and even a helicopter flight! Participants also engaged in sessions with Ord Valley Aboriginal Health Service (OVAHS) focused on self-care, wellbeing, and healthy relationships.

Setting out from Wuggubun, the group travelled on foot through rocky Gija Country, camping under the stars, fishing, preparing bush foods, and learning from Elders and cultural mentors.

The Bedford Downs Stock Route Walk provides an alternative pathway for young people at risk of entering, or already involved in the justice system. The program creates space for healing, leadership and growth, while supporting young people to imagine positive futures grounded in identity and belonging.



Partner Acknowledgement

The National Indigenous Australians Agency (NIAA) provided core funding for the program, secured through a direct approach to the Minister for Indigenous Affairs, enabling the delivery of activities and on-Country experiences.

WA Police, PCYC, and Youth Justice played a critical role in participant engagement and support, with the Kimberley Superintendent enabling police staff to be released to actively support the walk and associated activities.

54 Reasons contributed expertise in child and youth wellbeing, supporting trauma-informed practice and participant safety.

East Kimberley College supported the program by releasing a teacher to provide educational continuity and learning support throughout the journey.

LifeChanger Foundation delivered mentor training, equipping staff and volunteers with the skills to support young people's leadership, resilience, and decision-making.

Edge Adventures provided specialist outdoor and adventure expertise, supporting activities including hiking, caving, canoeing, and risk-managed physical challenges.

Ord Valley Aboriginal Health Service (OVAHS) delivered sessions focused on self-care, healthy relationships, and social and emotional wellbeing.

North Regional TAFE supported work-readiness activities, linking personal development with future education and employment pathways.

Job Pathways contributed funding and equipment to support participant engagement and participation.

Galvin's Plumbing sponsored essential equipment, including swags and clothing, ensuring participants were properly resourced for the walk.

Additional support was provided by **Sports Chaplaincy Australia, Alta-1, and the Talent Pool Academy team**, who contributed to wellbeing support and confidence-building activities, including laser tag experiences.



Governance Program

Wunan's Governance Program strengthens the capability of Aboriginal organisations and communities across the East Kimberley.

Established in 2015 and now funded through to June 2028 by the National Indigenous Australians Agency (NIAA), the program currently supports 14 organisations and 31 directors with free, tailored governance assistance.

The team delivers customised workshops and mentoring in governance, strategic planning, organisational structure, budgeting, decision-making, code of conduct, conflict of interest and effective meetings, helping Boards to lead with confidence and accountability.

The Governance Program at a glance (2025):

- 14** Aboriginal Organisations Supported in 2025
- 31** Directors Engaged
- 21%** Participants Completed Cert IV + Diploma in Leadership
- 70%** Of Participants First Nations



Kununurra Youth Night Space (KYNS) Co-Design Project

In 2025, Wunan Foundation partnered with MG Corporation and Kununurra-Waringarri Aboriginal Corporation (KWAC) to progress the KYNS Co-Design Project, a 12-month initiative focused on shaping a culturally safe, community-led after-hours youth space in Kununurra.

The KYNS Co-Design Project at a glance (2025):

- A Co-Design Committee was established, bringing together young people, community leaders, and cultural advisors
- A local project team was recruited, supported by an experienced external consultant
- A decision-making framework and project roadmap were developed to guide the work
- Consultations commenced with young people, families, and Youth Sector Champions
- Early planning began on data collection and evaluation, including how outcomes will be measured using information from local services

Supported by the Kimberley Juvenile Justice Strategy (KJJS) within the Department of Justice, the project is led by local Aboriginal people and organisations. It aims to design a night space that provides a safe, supportive environment for young people after dark, with outreach-based responses that help reduce street presence and divert young people away from the criminal justice system.

Throughout 2025, Wunan played a key role as a community co-design partner, working alongside MG Corporation, Kununurra-Waringarri Aboriginal Corporation, government agencies, and local services.

The proposed model draws on successful night space initiatives operating in Broome, Fitzroy Crossing, and Halls Creek, while being shaped specifically for the Kununurra context through local knowledge and lived experience.

The night space model includes a temporary physical safe space, access to mentors, food provision, next-day family follow-up, advocacy, and service coordination for street-present young people. Delivery and management will be led by local Aboriginal Community Controlled Organisations (ACCOs), working collaboratively with government partners to ensure the service is culturally safe, place-based, and responsive to community needs.

During 2025, the focus was on listening, planning, and co-design. Community members, young people, and stakeholders were invited to share ideas and help shape what the Kununurra night space could look like. This feedback will inform a proposed model to be presented to government in 2026 for consideration and support.

Subject to final approvals and funding, it is anticipated that the Kununurra Youth Night Space could open from mid-2026. The KYNS Co-Design Project represents an important step toward a community-led response that supports young people, strengthens safety, and reflects the aspirations of the Kununurra community.

2025 Close the Gap Report - Case Study

Wunan Foundation was one of ten Aboriginal Community Controlled Organisations nationally featured as a case study in the 2025 Close the Gap Report.

The report, released in March 2025, highlighted themes of agency, leadership and reform, recognising Wunan's role under Priority Reform Area 2 - Building the Community Controlled Sector. Our Stronger ACCOs, Stronger Families project was showcased for its work across 12 communities to transition early childhood services for Indigenous children into local Aboriginal-led organisations, strengthening community control and long-term outcomes in the East Kimberley and beyond.



East Kimberley Aboriginal Achievement Awards

The East Kimberley Aboriginal Achievement Awards, known fondly as the EKAAAs, is a highly anticipated community event recognising the leadership, commitment and contributions of local people and organisations across the region.

In August 2025, the Kununurra Picture Gardens came to life as more than 300 people gathered to honour the winners and nominees, outstanding individuals whose contribution spans culture, leadership, community service, business, sport, education and beyond. In a small town like Kununurra, the Awards offered a rare and uplifting chance to come together and celebrate local achievement.

Nominees and winners were announced throughout the evening, with guests enjoying beautiful, local catering and entertainment between presentations. The deserving winners were:

The "Abbey Forrest" Aboriginal Emerging Leader - **Petrea Griffiths**

Aboriginal Elder of the Year - **Ethel McLennon**

Outstanding Aboriginal Individual Contributor to Culture & Community - **Kia Dowell**

Outstanding Contribution to Aboriginal Education, Employment/ Training & Disability Services - individual - **Danielle Taylor**

Outstanding Contribution to Aboriginal Education, Employment/ Training & Disability Services - organisation - **Majorlin Kimberley Centre for Remote Health**

Aboriginal Business Enterprise of the Year - **Blak Tapas**

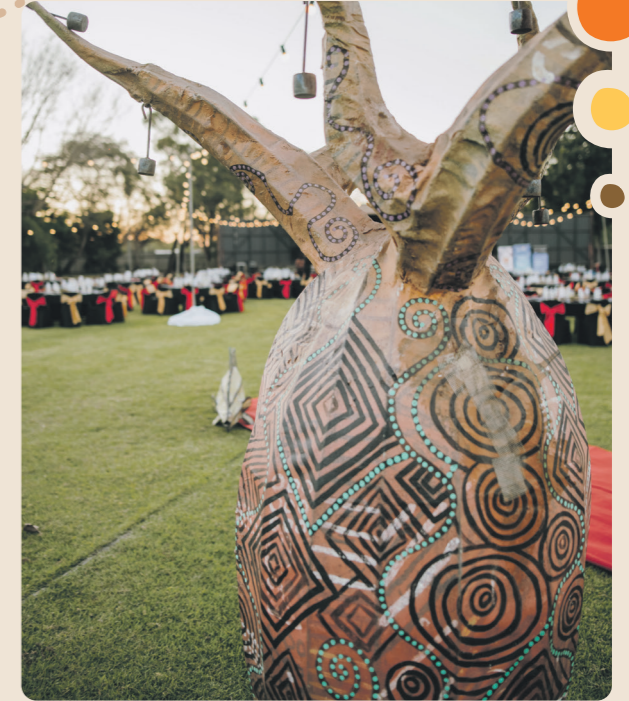
Aboriginal Affairs Champion of the Year - **Mary Baird**

Non-Aboriginal Person of the Year - **Dominique Reeves**

Non-Aboriginal Organisation of the Year - **Goorndoorngogam Boorro Daam Aboriginal Families as First Educators**

Aboriginal Person of the Year - **Bianca Howard**





This event doesn't happen without community backing, and the support this year was huge. A huge thank you to all our sponsors:

Platinum Sponsor: Lotterywest

Gold Sponsor: Shire of Wyndham East Kimberley, Job Pathways

Silver Sponsor: Horizon Power, Kimberley Development Commission, Key Assets Australia, Boab Metals Limited

Bronze Sponsor: Anglicare WA, Totally Workwear, Development WA, Kimberley Community Legal Services Inc., Ceres Farm, Acadia Farms.



A special thanks also to the East Kimberley Chamber of Commerce and Industry for their support with event coordination; Jamie Elliott, our MC for the night; North Regional TAFE; Wunan Foundation; Lily Lagoon Resort Kununurra for the delicious food and drink service; Wunan Maintenance Services for preparing the site; B Visual Media; David Cox; and Jean O'Reeri for helping make the night shine. Jean O'Reeri's exquisite table ornaments added beauty and meaning to every setting, while David Cox's artwork on the winners' plaques was a stunning, personal touch.

And to the team behind the lens, thank you for capturing the magic. B Visual Media would like to acknowledge the photographers who generously gave their time and talent: Tim Lanzon and Anne Clark, who photographed guests and the proceedings, and Kevin Hoang and Vicky Biorac, who captured the winners' portraits.



Education for Life Long Learning

Enhancing education to create a culturally responsive environment that fosters lifelong learning and economic independence for Indigenous students.

Early Years and Family Support Services

Wunan's Early Years and Family Support Services play an important role in supporting children and families across the East Kimberley to thrive in safe, nurturing and learning-rich environments.

Early Years and Family Support Services at a glance (2025):

- Child and Parent Centres operating in Kununurra and Halls Creek
- Beyond Term Extension secured to 30 June 2028
- **23 children** aged three and four supported through HIPPY
- **100% national accreditation** achieved for HIPPY (28/28 standards met)
- **7 staff completing Certificate II and III** in Community Services (Childcare)
- Early Years staff accredited as ASQ-TRAK Practitioners
- Programs aligned to Closing the Gap Outcomes 3 and 5

Through the Child and Parent Centres (CPCs) in Kununurra and Halls Creek and the Home Interaction Program for Parents and Youngsters (HIPPY), Wunan works alongside families to strengthen early development, school readiness and lifelong learning outcomes.

In 2025, Wunan was awarded a Beyond Term Extension for the CPCs in both Kununurra and Halls Creek, securing funding through to 30 June 2028 and providing continuity of support for families and communities.

The CPCs remained vibrant hubs throughout the year, delivering a wide range of activities including playgroups, school holiday programs, cultural celebrations, health initiatives and transport support. In Halls Creek, families and community members came together during NAIDOC Week to celebrate, marking the opening of the Centre's newly completed garden and upholding the importance of culturally strong, welcoming spaces for children and parents.

The Centres also welcomed several meaningful visits during the year, including Senator Malarndirri McCarthy on her first official visit to Kununurra, and Anne Aly, Minister for Early Childhood Education, who launched the Connected Beginnings initiative from the Wunan CPC and visited headspace Kununurra. These visits highlighted the growing recognition of the Centres' role in supporting early childhood development and family wellbeing in the region.

Workforce capability continued to grow, with Early Years staff accredited as ASQ-TRAK Practitioners, enhancing the Centres' ability to assess and support children's developmental stages. Concurrently, seven staff commenced Certificate II and III qualifications in Community Services (Childcare). The development of a data dashboard progressed during the year, supporting improved reporting against Closing the Gap targets and informing Wunan's revised strategic plan.

Outreach and community engagement across Early Years programs remained strong, underpinned by solid partnerships and collaboration with education, health and community service providers. Medium and long-term performance indicators remain on track, supported by continued professional development and sector engagement, including attendance at national and state conferences focused on early childhood, family wellbeing and community services.



HIPPY - Supporting Parents As First Teachers

HIPPY (Home Interaction Program for Parents and Youngsters) is a two-year, home-based early learning program that supports parents to be their child's first and most important teacher. By working directly with families, the program builds early literacy, language development and positive learning habits that support a confident transition to school.

In 2025, 23 children aged three and four participated in HIPPY, with parents reporting increased confidence, improved communication skills and greater enthusiasm for learning among their children. During the year, Wunan's HIPPY program achieved full national accreditation through the Brotherhood of St Laurence, meeting all 28 national standards and affirming the program's quality and impact.

Together, Wunan's Early Years and Family Support Services continue to lay strong foundations for children, families and communities, contributing to improved educational outcomes, strengthened family connections and positive lifelong learning pathways across the East Kimberley.



Garndim-banjelng Badang Yarrowoo Menewoolbtha Children's Service

In 2025, a new early childhood education and care service opened in Kununurra, supporting local families with access to culturally safe, high-quality early learning. The Gardim-banjelng Badang Yarrowoo Menewoolbtha Children's Service, meaning Growing Strong Roots for Strong Futures, was established through a partnership between Wunan Foundation, One Tree Community Services and MG Corporation.

The service provides early learning and care for 38 children aged from birth to five and prioritises access for Aboriginal children and families under funding from the Community Child Care Fund Restricted (CCCCFR) Expansion Program. The CCCCCFR is a key Closing the Gap initiative that supports the establishment and sustainability of early childhood education and care services in remote and very remote communities with limited access to culturally safe, high-quality early learning opportunities. Designed to respond to local need, the centre strengthens early years support for working families while contributing to long-term educational outcomes.

The service reflects a strong commitment to community-led delivery and local workforce development. Through the partnership with One Tree Community Services, traineeships and mentoring pathways support the development of a skilled local early childhood workforce, building capacity and employment opportunities within the community.

Cultural learning is embedded within the service through collaboration with the Mirima Dawang Woorlab-gerring Language and Culture Centre. Children participate in Miriwoong language learning as part of the Miriwoong Early Learning Language Capacity Development project, supporting early connection to culture, language and identity.

The opening of the Gardim-banjelng Badang Yarrowoo Menewoolbtha Children's Service represents an important investment in early childhood education in Kununurra, strengthening family support, workforce participation and culturally grounded learning outcomes for the East Kimberley.



KEEP

The Kimberley Education Excellence Program (KEEP) supports Aboriginal students from across the Kimberley region by providing safe, culturally supportive accommodation in Perth, alongside educational support delivered in partnership with Belmont City College.

KEEP offers both academic opportunity and a nurturing boarding environment, empowering students to build confidence, complete their schooling, and pursue further education and employment pathways.

Throughout 2025, students demonstrated strong engagement academically, socially and culturally, supported by a dedicated team of Program Managers, House Parents and a Program Coordinator. Our partnership with Belmont City College and the Follow the Dream program continued to provide valuable tutoring and academic guidance, while connections with families, remote schools and wellbeing services strengthened holistic student care.

Students participated in a wide range of weekend outings and in-house activities, contributing to improved attendance, positive behaviour and stronger peer relationships. During this reporting period, we celebrated two Year 12 graduates, welcomed new enrolments and supported a student to complete her traineeship and Certificate II in Hospitality. Staff commitment to high-quality care, consistent communication and cultural respect ensured another successful year for the program.

KEEP at a Glance:

Students Supported

- 11 Aboriginal female students supported through scholarships and mentoring
- 2 Students attained their Year 12 certificate
- 1 Student intends to enrol in tertiary education within six months of graduation

Employment & Workforce

- 6 Staff employed
- 4 Indigenous staff members

Student Achievement Highlights:

- 2 Year 12 graduates
- 1 student completed a traineeship and Certificate II in Hospitality
- Increased attendance and positive behavioural outcomes
- Strong engagement in weekend cultural and recreational activities

Student Success Stories



Jae-Dean

Joined KEEP in 2022 and developed strong, meaningful relationships with staff and peers. She successfully completed her Certificate II in Hospitality and undertook work placement at Aloft Perth. Jae-Dean is now studying her Certificate III in Hospitality at TAFE and aspires to become an air hostess. We are incredibly proud of her determination and continued growth.



Bethany

Began her KEEP journey in 2022 and became a valued member of the boarding house. She has since returned to Kununurra to be with her family and hopes to pursue a career as a ranger or in childcare. We wish her every success as she continues her pathway beyond KEEP.



Talent Pool Academy

The Talent Pool Academy supports young people in the East Kimberley to take their first steps into employment through paid work, accredited training and on-the-job experience. Delivered in partnership with Royal Life Saving WA, the program focuses on equipping Aboriginal youth with practical skills, confidence and workforce readiness while addressing local labour shortages.

Talent Pool Academy at a glance (2025):

- Young people engaged: **39**
- Employment outcomes: **10** participants employed as pool attendants with the Shire of Wyndham East Kimberley
- **5** participants employed as lifeguards and pool attendants with the Shire of Halls Creek
- **2** participants employed at Warmun Remote Pool
- **3** participants employed as casual youth officers with PCYC
- **1** participant referred to Wunan Maintenance Services for work experience
- **1** participant progressing into employment with Waringarri Aboriginal Corporation
- **Qualifications achieved:**
 - **22** First Aid certificates - 11 Bronze Medallions
 - **10** Pool Lifeguard qualifications
- Delivery partners: Royal Life Saving WA and local employers
- Funding partners: Department of Training and Workforce Development WA, Lotterywest, Kimberley District – WA Police Force

During 2025, participants secured paid roles with local shires, community organisations and recreation facilities, including pool attendant, lifeguard and youth support positions. Others progressed into work experience and employment pathways with Wunan enterprises.

All participants were employed and paid through Royal Life Saving WA, ensuring access to consistent wages, structured supervision and workplace protections. Alongside employment, young people completed accredited qualifications in First Aid, Bronze Medallion and Pool Lifeguarding, supporting safe and sustainable workforce participation.

The Talent Pool Academy demonstrates the impact of place-based collaboration, bringing together community organisations, government and employers to support young people into meaningful work.

Strong partnerships with local councils, community organisations and youth services underpinned program delivery, ensuring opportunities were locally relevant and responsive to community needs.



School Holiday Engagement Activities

During the school holiday period, Wunan delivered a series of laser tag activities supported through funding from the WA Police Community Services Fund across the East Kimberley, providing safe, active and engaging experiences for young people. The initiative was led by Wunan's Talent Pool Academy in partnership with the WA Police Force and delivered across multiple locations including Halls Creek, Balgo, Warmun and Wyndham.

Across five sessions, more than 180 children participated in the activities, supporting positive engagement, physical activity and connection during the school holidays. The program was delivered in collaboration with local partners including the Kimberley District – WA Police Force, Shire of Halls Creek, Gija Youth Program - Warmun Community Inc., Garnduwa, and the Shire of Wyndham East Kimberley.

This initiative reflects Wunan's commitment to delivering accessible, community-based activities that support young people's wellbeing, connection and positive use of school holiday time.



Target 120

Target 120 at a glance:

- **Target group:** At-risk young people aged 10-14 and their families
- **Location:** Halls Creek
- **Contract period:** Active through June 2026
- **Focus:** Early intervention, family support and culturally grounded engagement

Target 120 (T120) is a targeted early intervention program supporting at-risk young people and their families in Halls Creek. The program focuses on addressing risk factors early, strengthening family support and reducing the likelihood of ongoing contact with the justice system.

Throughout 2025, program delivery continued to grow in response to community need. The Target 120 team supported young people and families through the development of Individual Support Plans addressing criminogenic risk factors, alongside Integrated Service Plans that coordinated support across local government and non-government services.

During 2025, Wunan secured local accommodation to support staff recruitment and retention in Halls Creek. Access to suitable housing has been critical in sustaining program delivery, particularly for specialist roles, and supports the ongoing growth and stability of the Target 120 program.

Culturally grounded engagement remained central to the program's approach. During school holiday periods, young people participated in on-country activities designed to strengthen confidence and wellbeing. These experiences included time spent learning practical skills, sharing meals and building relationships with cultural community mentors, as well as activities that supported social connection and resilience for people.

Therapeutic supports were also delivered through equine-assisted activities, providing young people with opportunities to build trust, emotional regulation and self-awareness in a safe and supportive environment. In 2025, the Target 120 team also delivered an 'Inspiring Dreams' vision-boarding workshop for young people and their families in Halls Creek. Participants used creative tools to map personal goals and aspirations, supporting positive future planning and motivation. The workshop was delivered alongside engagement from Wunan's Talent Pool Academy, which enrolled new young people into skills development and employment pathway programs during the event.

Target 120 continues to play a critical role in supporting early intervention outcomes in Halls Creek, combining structured case support with culturally responsive activities that promote connection, capability and positive future pathways for young people and their families.



Wunan's Target 120 team wrapped up the year by sharing a little Christmas cheer, delivering gift baskets to each of their clients as a thoughtful way to end the year on a positive note. The initiative reflects the team's ongoing commitment to connection, care and meaningful support for young people and families.

A special thank you to Roimata for putting the gift baskets together, and to Engagement Worker Brent (pictured) for delivering them. Congratulations to the Target 120 team for their dedication and the positive difference they continue to make in the community.



Wunan Driver Training Program

Wunan's Driver Training Program supports people across the region to obtain their driver's licence by removing practical barriers such as access to a vehicle, a supervising driver, or structured driving support. The program pairs learner drivers with fully licensed mentors and qualified instructors, providing consistent, hands-on driving practice in a culturally safe and supportive environment.

Wunan Driver Training Program at a glance :

- 152** Clients supported to successfully obtain their Learner (L) Plates
- 73** Clients supported to obtain their driver licences
- 266** New clients entered the Driver Training program in 2025

Through personalised instruction and one-on-one mentoring, participants build confidence, develop road safety awareness, and strengthen the practical skills required to become safe and competent drivers. The program recognises that access to a driver's licence is a key enabler of participation in employment, education, training, and community life.

By offering flexible support and strong local partnerships, Wunan's Driver Training Program creates meaningful pathways to independence, mobility, and opportunity for participants across the region.

The Driving And Equity Program (DAEP) is supported by the Department of Transport Western Australia and the Department of Justice, delivering culturally appropriate driver training and education for Australian citizens, supporting people to achieve, retain, or regain their driver's licence.

In 2025, Wunan welcomed Jessica Stojkovski MLA to Kununurra to meet with participants from the Driver Access and Equity Program.

"It was fantastic to visit the Wunan Foundation in Kununurra and meet Rose!

I got to see firsthand the incredible impact of the Driving Access and Equity Program (DAEP).

A driver's licence can be life-changing, opening doors to employment, training and essential services.

Since 2022, the Cook Government has invested nearly \$26 million into the program, supporting community-led projects that help disadvantaged people across the State get their licence and drive safely.

In the Kimberley alone, more than 1,250 locals have participated, with 488 licences issued.

Wunan's work is about more than driving, it's about empowering people to take control of their future." - **Jessica Stojkovski MLA**

Case Study: Coral Rosewood



Coral joined the Wunan Driver Training Program in April 2025 with a strong commitment to achieving her driver's licence and increasing her independence. Through regular engagement with the program and ongoing encouragement from the Driver Training team, Coral steadily built her skills, confidence, and readiness for assessment.

With coordinated support from Wunan's Driver Training team and Job Pathways in Wyndham, Coral completed her driving lessons and successfully passed both her Hazard Perception Test and Practical Driving Assessment, achieving her red P-plates.

Coral described the experience as empowering, highlighting the role of consistent encouragement and practical support in helping her move forward with confidence. Gaining her licence has opened new opportunities for independence, employment, and personal growth, marking a significant milestone in her journey.

Case Study: Bevyn Councillor



Bevyn joined the Wunan Driver Training Program after relocating to Kununurra, seeking to gain his driver's licence to support his independence and future employment opportunities. Through hands-on instruction and access to a dual-control training vehicle, Bevyn has been able to develop his driving skills in a safe and supportive learning environment.

Working closely with qualified instructors, including an Indigenous male instructor, has supported Bevyn to build confidence, trust the learning process, and strengthen his ability to follow instructions. Over time, he has grown in confidence and continues to demonstrate steady progress during his driving lessons.

With regular engagement and ongoing support from the Driver Training team, Bevyn is continuing his licensing journey with confidence and determination, moving closer to achieving his goal of becoming a fully licensed driver.

Kununurra Study Hub

In 2025, planning and groundwork commenced for the establishment of a new Study Hub in Kununurra, creating a dedicated local space for people in the East Kimberley to undertake tertiary study close to home.

The hub forms part of the Pilbara Kimberley University Centres (PKUC) network, which supports students across the Pilbara and Kimberley to access higher education without the need to relocate.

For many people in the East Kimberley, relocating to Perth or other metropolitan centres to study is not a viable option. Geographic distance, financial pressures, family responsibilities, and strong cultural and community ties can present significant barriers to participation in higher education. A locally based Study Hub helps address these challenges by providing access to appropriate facilities, reliable connectivity, and a supportive learning environment within the region.

The establishment of the Kununurra Study Hub has been driven by strong collaboration across the region, guided by an Advisory Board made up of key local organisations. Members include the Wunan Foundation, Job Pathways, Shire of Wyndham East Kimberley, Shire of Halls Creek, Kimberley Development Commission, East Kimberley Chamber of Commerce and Industry, East Kimberley College, North Regional TAFE, and the Mirima Dawang Woollab-gerring Language and Culture Centre.

Through this collective approach, the Study Hub has been shaped to reflect local priorities and aspirations. We look forward to seeing the Kununurra Study Hub open and flourish in 2026, supporting increased participation in tertiary education and strengthening education pathways across the East Kimberley.



Financial Hub

Supporting financial resilience and independence.

- Service coverage: East Kimberley
- Core services: Financial counselling, digital literacy, tenancy and housing support, emergency relief
- Number of occasions of support this year: 2,970

Wunan's Financial Hub provides wrap-around financial support to Aboriginal individuals and families across the East Kimberley. The service supports people to build financial capability, strengthen independence and navigate increasingly digital financial systems through practical, culturally responsive assistance.

During the reporting period, the Financial Hub delivered a broad range of supports including financial counselling, assistance with identification and online banking, access to No Interest Loan Schemes (NILS), tenancy education, housing support, digital literacy programs and emergency relief. These services play an essential role in supporting household stability, financial confidence and access to essential services.

In 2025, the Financial Hub strengthened workforce capacity following successful recruitment into a long-vacant Financial Counsellor role. This was supported through targeted investment from ANZ Bank. Additional funding from Anglicare supported the delivery of digital literacy workshops across the East Kimberley, targeting vulnerable clients with limited access to technology and online services.

The Financial Hub also continued to deliver group education sessions focused on practical money management, including support to understand and manage utility bills and ongoing expenses. These sessions complement one-on-one counselling by building skills that support longer-term financial resilience.

During the year, the National Indigenous Australians Agency (NIAA) undertook an inspection visit and provided positive feedback on Wunan's integrated service model. The visit acknowledged the strength of employment outcomes and the impact of support services including the Financial Hub, Wunan Drive Training, accommodation services, headspace, KWIC and Wunan Health.

Feedback highlighted the quality of care provided to clients and the positive outcomes being achieved for individuals, families and the broader community.



Emergency Relief - transitioning to a sustainable model

In 2025, Wunan commenced changes to the delivery of emergency relief to ensure the service remains sustainable and focused on genuine crisis support. Food vouchers are transitioning to a limited weekly distribution model, alongside continued access to urgent assistance for critical situations such as utility disconnections or significant emergencies.

The Financial Hub remains a cornerstone of Wunan's community support services, helping individuals and families build capability, stability and stronger financial futures across the East Kimberley.

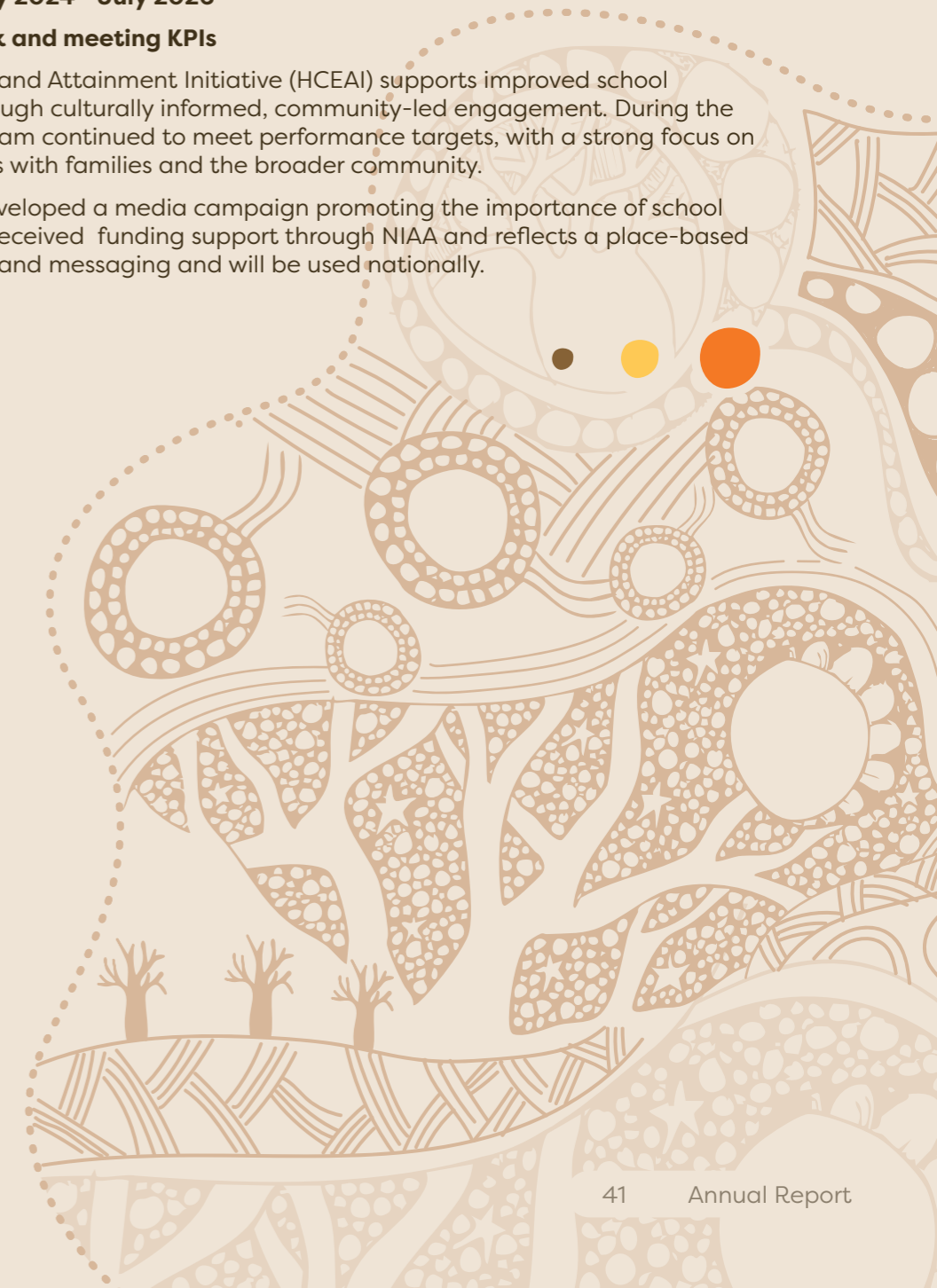
Halls Creek Education and Attainment Initiative (HCEAI)

Program snapshot (2025):

- Funding period: **February 2024 - July 2026**
- Program status: **On track and meeting KPIs**

The Halls Creek Education and Attainment Initiative (HCEAI) supports improved school attendance outcomes through culturally informed, community-led engagement. During the reporting period, the program continued to meet performance targets, with a strong focus on strengthening relationships with families and the broader community.

In 2025, Wunan Media developed a media campaign promoting the importance of school attendance. The project received funding support through NIAA and reflects a place-based approach to engagement and messaging and will be used nationally.



Meaningful Employment

Creating pathways that transition individuals from welfare to meaningful employment, supporting young people entering the workforce and advocating for greater Aboriginal participation across all industries.

Journey to Empowerment

The program focuses on strengthening job readiness, creating employment and training opportunities, and addressing barriers to workforce participation through coordinated, wrap-around support.

Journey to Empowerment at a glance:

- **Program focus:** Employment, training and holistic support
- **Location:** Kununurra
- **Program extension:** Active through June 2026
- **Participants engaged in 2025:** 15
- **Employment outcomes:** Participants placed across maintenance, hospitality and community services
- **Pathways created:** Transition in New Jobs Program Trial (NJPT) and Remote Jobs and Economic Development (RJED)
- **Place-based recognition:** Featured in national case studies on local leadership

In 2025, Journey to Empowerment (J2E) continued to support participants into paid employment across Wunan enterprises and partner organisations, including maintenance services and hospitality roles. Several participants progressed into the New Jobs Trial Program in recognition of their consistent engagement and work readiness, creating further employment pathways and opportunities for advancement. J2E has also provided a pipeline into broader employment initiatives, including roles linked to Lily Lagoon Resort operations, contributing to local workforce development.

Program delivery combines employment preparation with cultural engagement and wellbeing supports. Participants receive individualised assistance to address barriers to employment, including job-ready training, health assessments and access to culturally responsive supports. This whole-of-person approach supports resilience, confidence and sustained participation in work and training.

J2E was recognised nationally through PLACE (Partnerships for Local Action & Community Empowerment) Australia’s framework on place-based change, with Wunan featured for its investment in local leadership and community-led decision-making. Case studies highlighted the J2E program alongside Wunan’s governance and leadership initiatives, recognising their contribution to locally driven outcomes.



Building Confidence and Employment Readiness:

In 2025, J2E facilitated opportunities for participants and community members to come together through informal gatherings and structured job readiness sessions, strengthening relationships, peer support and confidence. Led by the Senior Career Advisor at our Jobs and Skills Centre, Courteney Topliss, and J2E program manager, Michelle Nipper.

The session was filled with engaging discussions, valuable insights, and practical skills to support participants on their employment journey.

Courteney shared:

“I was truly impressed with all their contributions to the discussions. It was great to see their enthusiasm and willingness to learn, and I’m looking forward to seeing how they apply these skills moving forward.”

Journey to Empowerment continues to play an important role in supporting economic participation and self-reliance across the East Kimberley, strengthening pathways to employment through culturally grounded, place-based and person-centred support.

In November 2025, J2E participants and community members came together for a community barbecue in Kununurra, with more than 50 people attending. The gathering provided an opportunity for participants, families and partners to connect in a relaxed and culturally safe environment, supporting relationship-building and community connection.

The event was supported by WA Police and Wunan’s Talent Pool Academy team and contributed to ongoing engagement with participants and families. Activities such as this complement the program’s employment and skills-focused outcomes by strengthening trust, connection and participation across the community.



Still On Track

Tucked away on the edge of town, the Still On Track workshop is an active learning space where welding and fabrication form part of the daily routine. Through a hands-on program combining welding, mentorship, and electric scooter assembly, Aboriginal young people in the East Kimberley are building practical skills, confidence, and pathways toward positive futures.

Delivered by Wunan Foundation and funded through the WA Government's Criminal Property Confiscation Grants Program, Still On Track was developed in direct response to rising youth disengagement, school absenteeism, and limited access to meaningful training and employment pathways. The program provides a structured, strengths-based approach that supports young people who are at risk of entering the justice system.

Still On Track at a glance (2025):

- 7 Young people completed the 10-week program
- 169 Contact points delivered with participants
- 2 Participants transitioned into employment
- 9 Industry and workshop visits undertaken
- 7 Participants completed First Aid or White Card training
- 0 Interactions with WA Police during the program

In 2025, learning extended beyond the workshop through a range of on-Country and community-based experiences. Participants took part in fishing trips, engaged in life skills sessions with Wunan's Financial Hub to build budgeting and planning skills, shared a feed together in local community spaces, and visited a number of local employers, businesses and organisations to build networks and identify future employment opportunities. Regular one-on-one check-ins with staff supported goal-setting and helped identify pathways into training, employment, or further education.

"This program doesn't just teach welding. It builds confidence, resilience, and a strong sense of belonging. When young people feel seen, supported, and capable, it sets them on a better path, and that has a ripple effect across the whole community."

- Prue Jenkins, CEO, Wunan Foundation



The 10-week program concluded successfully on 26 September, with all participants, previously disengaged from school, remaining engaged through to completion. Delivery was supported by a strong network of regional partners, including North Regional TAFE Kununurra, Job Pathways, Revive, Shire of Wyndham East Kimberley, The Skill Engineer Ltd., Wunan Maintenance Services, Wunan Health & Wellbeing Centre, Ord Valley Aboriginal Health Service, 54 Reasons, PCYC, East Kimberley College, Wirrum Dawang, Django, and WA Police.

Still On Track will continue in 2026, with the next program scheduled for April. By combining practical skills, cultural learning, and consistent mentorship, Still On Track supports young people to re-engage, build confidence, and move forward with purpose, contributing to stronger outcomes for individuals, families, and the East Kimberley community.

Mentor Spotlight - Jono Farrar

Bunuba-Kija man Jono Farrar played a key mentoring role within the Still On Track program, providing guidance, encouragement, and a strong local example for young people in Kununurra.

"When young Aboriginal people see someone from their own community doing well, it helps them believe that they can do it too. Here in Kununurra, young people don't have to look far to see what not to do, but they also need people who can show them a positive path."

Through his mentoring, Jono supported participants to build confidence, make positive choices, and see new possibilities for their future.



Jobs and Skills Centre

The Kununurra Jobs and Skills Centre (JSC) is a key resource supporting employment and skills development across the East Kimberley. Based at North Regional TAFE's Kununurra campus, the Centre provides tailored support to jobseekers and employers, connecting people to training, employment opportunities and workforce pathways that support regional economic participation.

Jobs and Skills Centre at a glance (2025):

- **Location:** North Regional TAFE Kununurra campus
- **Service area:** East Kimberley
- **Focus:** Employment, training pathways and workforce support
- **Key audiences:** Jobseekers, employers and industry
- **Activities delivered:** Careers expo participation and targeted job readiness session

During the reporting period, the Jobs and Skills Centre played a central role in the East Kimberley Employment and Careers Expo, held at the Kununurra Leisure Centre. The event brought together local businesses, training providers and industry organisations to showcase career and training opportunities available across the region. Strong community attendance highlighted ongoing demand for accessible employment information and pathways for both current and future jobseekers.

The Expo also provided an opportunity to showcase the breadth of Wunan's employment, health and support services, including employment pathways, youth programs, driver training and financial support services. Practical demonstrations from local industry partners offered insight into real-world skills and employment opportunities, supporting informed decision-making for attendees.

In addition to community-wide engagement, the Jobs and Skills Centre delivered targeted job readiness sessions for Journey to Empowerment participants. These sessions focused on practical employability skills, workplace expectations and career planning, supporting participants to build confidence and preparedness for employment.



Job Pathways - A Strategic Employment Partnership

Job Pathways is a not-for-profit community development organisation jointly owned by Wunan Foundation and Wirrum Dawang Pty Ltd (formerly KREAC). Through this 50% joint venture, Wunan advances its core employment strategy across the Kimberley.

As a core strategy under Wunan's Employment Pillar, Job Pathways plays a critical role in delivering employment services and driving economic participation across the Kimberley.

Formerly known as East Kimberley Job Pathways (EKJP), the organisation has grown into a significant regional employment provider supporting individuals, families and communities to build sustainable livelihoods.

In November 2025, Job Pathways began delivering the Remote Area Employment Services (RAES) contract across the Kimberley, providing tailored employment support to approximately 2,200 people in remote communities including Halls Creek, Tjurabalan, the East Kimberley, Broome and the Dampier Peninsula.

Through community-led projects and engagement-focused approaches, the program strengthens workforce participation and contributes to long-term economic and social development across the Kimberley, aligned with national Closing the Gap targets.

In addition to delivering RAES across the Kimberley, Job Pathways also holds the Workforce Australia employment services contract for Broome, supporting approximately 800 participants.

The organisation's service portfolio extends beyond employment case management to include WAYFINDER, which delivers NDIS-related supports, and Revive, a community-based recycling initiative contributing to local circular economy activity.

Job Pathways is further supported through a range of grant-funded programs and strategic investments that strengthen its capacity to deliver employment services, develop workforce pathways and support long-term regional economic participation.

Driving Regional Economic Participation

Through its joint ownership of Job Pathways, Wunan supports Job Pathways to strengthen its capacity to influence employment systems, attract investment into the Kimberley, and embed culturally grounded approaches to workforce participation.

Job Pathways enhances Wunan's broader employment strategy by:

- Aligning service delivery with community priorities
- Building partnerships that create real job opportunities
- Supporting Aboriginal economic participation
- Strengthening local workforce capability
- Contributing to long-term, community-led economic development



Images courtesy of Job Pathways

Connected Health

Leading the Health sector in the East Kimberley by integrating primary and preventative health care, creating culturally safe services, fostering strategic partnerships & establishing financially sustainable healthcare models.

Wunan Health & Wellbeing Centre

Wunan Health & Wellbeing Centre is a multi-disciplinary, accredited private medical practice providing primary health care services. Based in Kununurra, the centre supports local residents and visitors through accessible, high-quality medical care delivered by an experienced and dedicated clinical team.

The new facility was opened in 2020 with the support of Lotterywest, Wunan Health reflects Wunan's long-term commitment to a holistic, community-led approach to health and wellbeing.

Service Activity

- Total patient visits over the reporting period: **19,462**
- Number of registered patients: **5074**
- Active patients (patients with 3+ visits in the past two years): **2913**
- Aboriginal and Torres Strait Islander Patients: **569 (11%)**
- Percentage of patients with chronic disease/illness: **31.06%**

Operating a general medical practice has been a long-standing ambition of Wunan, aligned with the Foundation's broader focus on social, economic and community wellbeing.

Wunan Health continues to evolve to meet local needs, and delivers the following clinical services:

- General practice and primary health care
- Men's and women's health
- Aboriginal and Torres Strait Islander health checks
- Chronic disease management
- Child and adolescent health
- Mental health and counselling support
- Family planning, cervical screening and pregnancy testing
- Pre- and post-natal care
- Immunisations and travel health advice
- Skin checks and minor procedures
- Occupational health services, including pre-employment and fitness-for-work assessments
- Licensing medicals, including driving, maritime and aviation
- Diagnostic services, including ECGs, spirometry, audiometry and retinal screening

During 2025, Wunan Health continued to strengthen its service model through workforce development, infrastructure investment and strategic partnerships. Clinical capacity expanded across general practice, allied health and training pathways, supporting continuity of care and improved access to local health professionals. This included the onboarding of additional GP registrars and allied health services, as well as strengthened training and supervision arrangements in partnership with other Aboriginal community-controlled and regional health providers.

Wunan Health also progressed the establishment and operation of specialist services, including the Kununurra Withdrawal Intervention Centre (KWIC), supported by the development of clinical governance frameworks, policies and procedures, and strong collaboration with regional health, justice and community stakeholders.

Throughout the year, Wunan Health worked closely with key partners across health, justice and social services to support coordinated care, referral pathways and integrated responses to community need. Disability advocacy services also continued to be delivered, supporting individuals to navigate systems and access appropriate supports.

In 2025 the GP Clinic successfully achieved their triennial accreditation against the Royal Australian College of General Practitioners Certification.

Recognition of Leadership in Rural Health

In 2025, Wunan Health's Practice Manager, Suzette Chemello, was recognised nationally for her leadership and contribution to rural healthcare, receiving the Outstanding Contribution to Rural Practice Management Award from the Australian College of Rural and Remote Medicine.

Suzette has worked in Kununurra for more than a decade and has led Wunan Health for eight years. During this time, she has played a central role in strengthening service delivery, workforce stability and training pathways within the practice, supporting the delivery of high-quality primary health care in a remote regional setting.

Under her leadership, Wunan Health has supported the training of more than 20 GP registrars, welcomed rural generalists and general practitioners, and developed a strong workplace culture recognised across the sector.

Congratulations Suzette!



headspace Kununurra

headspace Kununurra at a glance (2025):

- Contract extension secured through **30 June 2026**
- Increased annual funding to support service demand
- Additional investment for a new **mental health and suicide prevention role**
- Increased service delivery and **growth in self-referrals**
- Focus on psycho-education, community engagement and awareness

headspace Kununurra continued to play a critical role in supporting the mental health and wellbeing of young people across the East Kimberley. During the reporting period, the service secured a three-year contract extension, providing stability and certainty to continue delivering youth-focused mental health supports in the region.

In 2025, headspace Kununurra delivered a range of youth mental health, wellbeing and vocational supports to young people across the East Kimberley. The service secured a three-year contract extension, providing continuity of youth-focused mental health services in the region. Additional funding supported the recruitment of a dedicated mental health and suicide prevention role.

Throughout the year, headspace Kununurra recorded increased service activity, including growth in self-referrals. Service delivery focused on early intervention through individual support, psycho-education workshops and community engagement activities.

Programs and supports delivered in 2025 aligned to headspace's four core streams and included:

- **Mental health support**, including individual counselling and psycho-education
- **Physical and sexual health services**, including access to a GP clinic providing low- or no-cost appointments
- **Alcohol and other drug support**, delivered through individual appointments and group-based activities
- **Vocational support**, delivered through Jobs and Skills @ headspace sessions in partnership with the Jobs and Skills Centre

Group activities delivered during the year included youth music and art programs supporting creative expression and social connection, as well as structured social activities designed to promote engagement in a safe, youth-friendly environment.

headspace Kununurra also progressed community awareness and education initiatives throughout 2025, supporting increased understanding of available services, reducing barriers to access and encouraging young people to seek support early.



Kununurra Withdrawal Intervention Centre - Safe, Supportive, Culturally Strong

The Kununurra Withdrawal Intervention Centre (KWIC) is Western Australia's first Aboriginal community-controlled low-medical withdrawal service. Operated by Wunan Health, KWIC provides a culturally safe, short-term residential program supporting people to withdraw from alcohol and other drugs in a respectful, healing environment.

KWIC at a glance (2025):

- **25 admissions** into the service across the calendar year
- **20 individual clients supported**, including 5 readmissions
- Average length of stay: **8.7 days**
- **76%** of consumers identified as **Aboriginal and/or Torres Strait Islander**
- Gender profile: **56% female, 44% male**
- **75 referrals** received, with **48 assessments completed**
- **46 assessments endorsed by the Multidisciplinary Team (MDT)** for admission

Operating 24 hours a day, seven days a week, KWIC offers six onsite bedrooms with stays of up to 14 days. The service delivers individualised withdrawal plans supported by Nicotine Replacement Therapy and wrap-around cultural and psychosocial care. Importantly, KWIC's holistic approach recognises that withdrawal is only one part of a person's journey, with care extending to social and emotional wellbeing, mental health, and pathways to longer-term support.

The facility was purpose-built to provide a safe and supportive space where individuals can access withdrawal support close to home, community and culture. Funding is provided by the WA Mental Health Commission, with construction supported by Job Pathways, Minderoo Foundation and Lotterywest.

During the reporting period, KWIC welcomed its first residents in late May and continued to build momentum as referrals increased. In 2025, the service has completed 45 assessments, with clients transitioning into residential support. Early service data indicates repeat admissions for some clients, reflecting the importance of culturally safe care and the trust being placed in the service by community.



Ord Valley Aboriginal Health Service remains KWIC's largest referrer, reflecting strong collaboration across local health services. The service has also increasingly been approached to support more complex and higher-risk referrals, demonstrating growing confidence in KWIC's clinical governance and culturally responsive model of care.

Leadership and operational oversight of KWIC sits with Manager Caleb Edelsten, who also oversees headspace Kununurra, strengthening coordination across youth and adult mental health and wellbeing services. KWIC was visited during the year by senior representatives from the WA Mental Health Commission.

As a new service, KWIC continues to navigate workforce pressures common across the health sector, including staffing availability and shift coverage. These challenges are being actively managed while maintaining safe service delivery and staff wellbeing.

KWIC represents a critical addition to the East Kimberley's health and wellbeing landscape, providing culturally strong, community-controlled care that supports dignity, safety and recovery, while responding to the complex realities faced by individuals and families across the region.



Integrated Care and Allied Health Program

In 2025, Wunan Health & Wellbeing Centre expanded its service model through the establishment of an Integrated Care and Allied Health Program, strengthening access to coordinated, multidisciplinary health care across Kununurra and the wider East Kimberley.

Funded by the Department of Health, Disability and Ageing through a contract with the WA Primary Health Alliance, the program responds to longstanding gaps in access to local allied health services, particularly for people living with complex and chronic health conditions. The expansion aligns with Wunan Health's long-term vision to deliver holistic, community-led primary health care that integrates clinical excellence with cultural safety.

As part of this expansion, ten new allied health and support positions were successfully recruited, with service delivery scheduled to commence in January 2026. The new roles strengthen Wunan Health's multidisciplinary workforce and support an integrated approach to care delivered from the Centre's purpose-built, accredited medical facility in Kununurra.

Clinical Director Dr Stephanie Trust said the expansion reflects a long-standing commitment to strengthening integrated care in the East Kimberley.

"For a very long time, I've recognised the critical role allied health plays in providing comprehensive primary health care for our communities, families and patients," Dr Trust said.

"As a GP, I've seen firsthand the severe shortage, and at times the absence, of local allied health services, which has created real challenges for patients across the East Kimberley."

Dr Trust's leadership has shaped the Allied Health Framework underpinning the program, developed through consultation with local stakeholders to support culturally responsive practice across health disciplines.

"It's about creating the right environment for allied health professionals to work effectively in remote settings," she said. "The region needs more allied health services, and it's vital that professionals feel supported and connected to stay."

Operating under Wunan Foundation, Wunan Health's approach to care is guided by the Wunan Way, strengthening Aboriginal ways of being, knowing and doing. The expansion of allied health services represents a significant step forward in strengthening local access to integrated care and improving long-term health outcomes for individuals, families and communities across the East Kimberley.



East Kimberley Allied Health Framework

In 2025, Wunan Health was proud to launch the East Kimberley Allied Health Framework, a regionally focused resource designed to strengthen access to allied health services and improve long-term health outcomes across the East Kimberley.

The Framework was developed in response to ongoing shortages in allied health provision, which continue to limit access to essential care for people of all ages across the region. It was facilitated through Wunan Health's East Kimberley Allied Health Project and developed in consultation with local stakeholders to ensure it reflects local priorities, workforce realities and service delivery challenges.

The East Kimberley Allied Health Framework outlines clear priorities to improve access to care, grow a strong local allied health workforce, and support the development of a sustainable and integrated health system. It includes practical tools, local insights and a planning checklist to support workforce development, service investment and coordinated regional planning.

The Framework is intended to support organisations working across health, education and training, human services, and the public, private and philanthropic sectors. It represents an important step toward coordinated, place-based solutions that strengthen allied health services and support better health outcomes for communities across the East Kimberley. It's available here:

<https://www.wunan.org.au/documents/25/east-kimberley-allied-health-framework>

Disability Advocacy Program

The East Kimberley Disability Advocacy Program continues to provide targeted support to Aboriginal people with disability across the region, assisting individuals and families to better understand and navigate the National Disability Insurance Scheme (NDIS).

Operating through a centralised hub and outreach model, the program maintains a presence across Kununurra, Wyndham and surrounding communities, including remote locations where access to disability information and advocacy remains limited. Wunan's place-based advocacy service in Halls Creek also continues to provide locally grounded support to community members seeking assistance.

The program focuses on helping participants understand their rights, prepare for NDIS processes, and engage with assessments and service systems with greater confidence. By supporting individuals to communicate their needs and access appropriate services, the initiative contributes to improved self-advocacy and informed decision-making.

Community ambassadors remain an important part of the model, supporting local information sharing and strengthening awareness of disability supports across the East Kimberley. Through mentoring and guidance, the program continues to build local capability and promote culturally responsive approaches to advocacy.

While modest in scale, the program plays an important role in ensuring that Aboriginal people with disability in remote communities have access to clear information, advocacy support and pathways into appropriate services.



Accessible Housing

Empowering Indigenous communities, reducing welfare reliance and fostering long-term financial stability through the development of sustainable housing solutions.

Strengthening Workforce Through Secure Housing

Wunan Foundation was selected as one of six Aboriginal Community Controlled Organisations (ACCOs) across the Kimberley and Pilbara regions to receive support through the State Government's Aboriginal Employee Housing Grants Program, funded under the North-West Aboriginal Housing Fund (NWAHF).

Through this program, Wunan is delivering six new homes to provide affordable rental accommodation for Aboriginal employees and their families. The development is currently under construction and represents an important investment in workforce stability across the East Kimberley. Secure and stable housing is fundamental to workforce participation, staff wellbeing and long-term organisational sustainability in remote regions, and this initiative strengthens Wunan's capacity to attract and retain a skilled local workforce.

The project, being constructed by Western Australian company Thermal Comfort Homes, comprises a mixed two-storey block of six dwellings, including two fully accessible units located on the ground floor. The inclusion of accessible housing ensures greater inclusivity and flexibility for employees and their families.

This initiative reinforces Wunan's commitment to building strong organisations, strong families and strong communities.



"These new homes will boost the capability of Wunan to attract and retain quality employees in Kununurra by offering employer-provided housing to workers to increase stability and connection to community.

"I am excited to see these six new homes being delivered as one of the seven Aboriginal Employee Housing projects planned for the Kimberley and Pilbara is testament to our government's ongoing commitment to addressing housing supply concerns."

- Kimberley MLA Divina D'Anna



Pathways to Home Ownership (PTHO)

The Pathways to Home Ownership Program (PTHO) aims to promote and support home ownership among eligible Aboriginal participants. Funded by the National Indigenous Australians Agency (NIAA), this program has been designed to offer a range of services and support to individuals and families looking to take the first steps towards homeownership.

- 4 Successful home ownership outcomes
- 1 Participants progressed to pre-approval
- 5 Participants in the Expression of Interest (EOI) phase
- 7 Personalised financial plans developed
- 59 Stakeholder engagements delivered

Case Study: Hermelia's Pathway to Home Ownership



For Hermelia, the idea of owning a home initially felt out of reach. "I thought owning a home was impossible. At my first meeting I was in hot and cold sweats, it was nerve-wracking."

Through the support of Wunan's Pathways to Home Ownership team, Hermelia was assisted through each stage of the process, including communication, interviews and application requirements. "They supported me 100 per cent, with emails, phone calls and interviews. They took away so much of my stress."

Hermelia's application was successful, and she was able to move into her own home.

"When I found out I was accepted, I was over the moon. Getting the keys on my birthday was the best present ever." Since moving into her home, Hermelia has experienced greater financial stability and wellbeing for her family.

"My savings have been rising, my boys are happy with so much space to play, and we love being in our own home together." Reflecting on her journey, Hermelia encourages others to explore the opportunity.

"Don't think it's impossible. Give Wunan a call, your dream may come true."

Case Study: Resantia's Pathway to Home Ownership



For Resantia, owning a home once felt out of reach. "I thought owning my own home was an impossible dream."

Resantia first learned about the program through community expos and decided to take the first step by attending an initial meeting. "I first heard about the program when I went to a couple of expos. I thought, wow, maybe I should give this a go. I remember the first meeting, it was exciting. They made me feel comfortable."

Following this initial engagement, Resantia was supported through the application process. "When I got the phone call to say my application was successful, I actually screamed. I was so excited, I told everybody in the office."

Securing a home marked a major milestone. **"When I found the house I wanted to buy, I felt very excited. I did this. This is my home for life, for my future. This is everything I wanted."**

These case studies highlight how tailored, culturally responsive support delivered through the Pathways to Home Ownership (PTHO) Program creates lasting outcomes for individuals and families. By supporting participants to navigate the home ownership process with confidence, the program contributes to long-term housing stability, independence and improved wellbeing.

In 2025, Wunan strengthened the impact of the PTHO Program through a dedicated video storytelling campaign showcasing participant success stories and providing a clear, step-by-step overview of how the program works. Delivered by Wunan Media in collaboration with the PTHO team, and supported by funding from ANZ, the campaign has expanded the reach and accessibility of the program. The videos are now available on the Wunan website and will be promoted more broadly throughout 2026.



KNX Community Hostel

Wunan Foundation and MG Corporation have proudly partnered to establish the KNX (Kununurra) Community Hostel, providing a safe, supportive, and culturally respectful environment for Aboriginal young people pursuing education, training, or employment.

Located in Kununurra, the 42-bed facility represents a significant investment in the future of East Kimberley's young people, ensuring access to stable accommodation and the practical supports needed to succeed during critical life transitions.

KNX Community Hostel at a glance (2025):



133

Young people supported in 2025.



86%

Of people supported aged 18-24.



80%

Occupancy maintained throughout the year.



76%

Resident retention



81%

In full-time employment among current residents.



Strong local partnerships

supporting pathways to work and training.

The hostel continues to play a vital role in supporting young people aged predominantly 18-24, many of whom are navigating pathways from care, moving into employment, or undertaking training away from home. Since January 2025, more than 130 individuals have been supported through the hostel, with occupancy remaining consistently high and resident retention continuing to improve. These outcomes reflect both the ongoing demand for supported accommodation in the region and the strength of the hostel's operating model.

Employment outcomes remain a key indicator of success. A high proportion of current residents are engaged in full-time employment, supported through strong partnerships with local employers and programs including MG Corporation's Home Stretch Night Patrol, Waringarri Arts, Journey to Empowerment, Wayfinder, Revive, Job Pathways, and others. Stable accommodation has enabled residents to maintain employment, build routines, and develop independence.

The KNX Community Hostel is more than a place to live, it is an active contributor to community life. Throughout the year, the hostel hosted and supported a range of youth and community-based initiatives, including the Bedford Stock Route Walk, NAIDOC Junior Footy Carnival, Tourism WA Food Ambassadors activities, Talent Pool Academy programs, the WA Police Youth Diversion Program, and the Kununurra Crocs Swimming Club. These activities strengthen connection, participation, and positive engagement across the community.

The hostel operates through an integrated, wrap-around model, strengthened by collaboration with local services, warm referral pathways to specialist supports, and trusted partnerships with key agencies. Wunan continues to maintain strong relationships with local, regional, State, and Federal stakeholders, ensuring service delivery aligns with broader reform priorities and community needs.

Looking ahead, Wunan and MG Corporation continue to work collaboratively with Aboriginal Hostels Limited to explore long-term arrangements that support local control and sustainability of the facility beyond 2026. The KNX Community Hostel remains a critical response to the ongoing need for supported accommodation in the East Kimberley and a proven platform for supporting young people to build safe, stable, and positive futures.

Commercially Sustainable

Driving Wunan's economic sustainability and fostering economic self-sufficiency and entrepreneurship, while also establishing a media and communications enterprise to amplify Indigenous voices and issues.

Lily Lagoon Resort

Lily Lagoon Resort at a glance (2025):

- **Status:** Aboriginal-owned and operated resort
- **Focus:** Tourism, hospitality and local upskilling and employment
- **Workforce growth:** Significant increase in local employment opportunities
- **Programs supported:** Remote Jobs and Economic Development (RJED)
- **Facilities expanded:** Restaurant, accommodation and function centre
- **Recognition:** National media coverage highlighting workforce outcomes.
- **In early 2025, Senator McCarthy visited the Lily Lagoon Resort in the East Kimberley to highlight the success of the RJED program, which is creating jobs in remote communities.**

Lily Lagoon Resort is a flagship Wunan enterprise and a key contributor to employment, training and economic participation in Kununurra. In 2025, the Resort experienced huge growth, with expanded facilities, increased service capacity and the creation of new employment opportunities for local Aboriginal people across hospitality, housekeeping, maintenance and operations.

A major milestone during the year was the continued development of the Resort's restaurant, food and beverage, landscaping and accommodation offerings. This expansion strengthens Lily Lagoon's role as a destination while creating additional training and employment pathways in hospitality and events, helping address workforce shortages and support long-term skills development for Indigenous people in the East Kimberley.

Lily Lagoon Resort plays a central role in the delivery of employment programs, including the transition from the NIAA New Jobs Program Trial (NJPT) to the NIAA Remote Jobs and Economic Development (RJED) Program. Through this program, participants are supported into paid employment at the Resort.

Lily Lagoon Resort also received national recognition through coverage by the ABC, which highlighted the Resort's role in building a skilled Aboriginal workforce in remote hospitality. Staff shared their experiences across a range of roles, demonstrating the confidence, stability and pride that comes with meaningful employment and consistent support.

Case Study: Employment Pathways at Lily Lagoon Resort

Lily Lagoon Resort provides supported employment opportunities for local Aboriginal people, creating pathways into work, skills development and long-term participation in the workforce. Aboriginal employees account for approximately 70 per cent of the Resort's workforce, with many supported through Job Pathways, which connects jobseekers with employers and ongoing assistance.

Cameron re-entered the workforce as a kitchen hand after a period of incarceration. He describes feeling "pretty nervous" when he started but credits his approach of "suck it up and smash it" with helping him settle into the role. Cameron now works consistently in the kitchen, supporting food preparation and cleaning, and values the structure and second chance employment has provided.

For Miriwoong woman Sharnte Duncan, Lily Lagoon offered her first experience of employment. She began as a barista, building confidence and transferable skills before returning to the Resort as a housekeeper. Sharnte is now working towards further training with the goal of progressing into a reception role. "You wouldn't know what to do at first, but once you get the hang of it, it just goes as a routine," she says. "It's the best feeling you'll ever have, even if you never worked before."



Trason Simon joined the maintenance team after disengaging from school. Employment at the Resort provided practical skills and financial independence, including purchasing an electric scooter with his first pay. His decision to work also influenced his peers. "Some of the boys saw me getting a job and they got jobs," Trason says. "They just need a bit of a push from the homies."

Employment at Lily Lagoon Resort is supported through the Remote Jobs and Economic Development (RJED) Program, which enables paid roles alongside training, mentoring and wrap-around support. Together, these stories reflect the impact of consistent, supported employment in creating stability, confidence and meaningful pathways for individuals and families across the East Kimberley.

Lily Lagoon Resort is a prime venue for functions, conferences and community events. Throughout the year, the Resort hosted a wide range of gatherings, supporting community groups, businesses, celebrations and local events alongside its tourism and employment focus.





In June, Lily Lagoon Resort was proud to host the NAIDOC Junior Ball, a special night for young people in Kununurra, it was such a fun night, full of deadly moves, big smiles and community spirit. We loved seeing so many young people arrive looking sharp and bright, and it was great to host this special event in our newly refurbished restaurant.

It was a big community effort to get everyone along and we were so thankful to be chosen as the host for this special NAIDOC event.

Photo credit to the amazing photographers: Anne Clarke & Chace Chunuma.



Bottom left and right images courtesy of Giulia Bertoglio ABC Kimberley

Wunan Maintenance Services (WMS)

Wunan Maintenance Services (WMS) is Wunan's social enterprise delivering property maintenance services while creating sustainable employment opportunities for local Aboriginal people in Kununurra. The enterprise supports workforce participation through structured, on-the-job training and supervised work across a range of maintenance activities.

WMS at a glance:

- **Service type:** Property and grounds maintenance
- **Location:** Kununurra
- **Workforce:** More than 25 local Aboriginal employees
- **Focus:** Employment, training and skills development
- **Programs supported:** Traineeships, apprenticeships and transition through NIAA New Jobs Program Trial (NJPT) and Remote Jobs and Economic Development (RJED)
- **Key clients:** Shire and Community facilities, public spaces and Wunan properties

Throughout 2025, WMS delivered services including garden and lawn care, yard clean-ups and minor property repairs. The team provided practical work experience for employees, trainees and apprentices, supporting skill development, work readiness and pathways into longer-term employment.

WMS continued to maintain Wunan's property portfolio, including the KNX Community Hostel, Lily Lagoon Resort and the Kimberley Withdrawal Intervention Centre (KWIC), ensuring facilities remained tidy, functional and well maintained to support service delivery and community use.

The team also contributed operational support to key community events, including the East Kimberley Aboriginal Achievement Awards, assisting with preparation, set-up and pack-down to support the smooth delivery of the event.

In 2025, WMS supported participants through the New Jobs Trial Program, providing structured work experience and practical skill development as part of broader employment pathways.

In late 2025, WMS secured a new contract with the Shire of Wyndham East Kimberley (SWEK) to deliver maintenance services across Nicholson Park, Celebrity Tree Park and White Gum Park. The contract commenced in July 2025 as a three-month trial, marking an important step in the continued growth of the enterprise and its contribution to the care of shared community spaces.

Wunan Maintenance Services continues to play a key role in combining service delivery with local employment outcomes, supporting skills development, workforce participation and the maintenance of community assets across the East Kimberley.



iBase

iBase provides professional accounting and bookkeeping services to small and medium-sized businesses and Aboriginal organisations across Western Australia. iBase supports clients to manage their finances with confidence through practical, reliable and culturally informed financial services.

Client base snapshot (2025):

- **15 external clients**
- **3 internal clients** (including Lily Lagoon Resort, Wunan Health and Wunan Finance)
- Client focus: **Small to medium-sized businesses and Aboriginal organisations**
- Service reach: **Kimberley and Perth**

The purpose of iBase is to strengthen financial capability and systems, enabling Aboriginal enterprises and small businesses to operate sustainably and with greater self-determination. By supporting sound financial management, iBase contributes to Wunan's broader vision of Aboriginal people leading their own economic futures.

iBase delivers end-to-end financial management services, including payroll, taxation, reporting, compliance and the preparation of financial statements. In 2025, the team supported a mix of external clients alongside internal Wunan enterprises, providing consistent, tailored financial support across diverse operating environments.

With more than a decade of experience, iBase has established itself as a trusted financial partner for Aboriginal organisations. The service operates on fixed, transparent monthly fee arrangements and customised service agreements, providing clarity, reliability and value for clients.

Based in Perth with strong roots in Kununurra, iBase continues to support clients across regional and metropolitan Western Australia. The team's cultural awareness and understanding of regional business realities underpin its approach, ensuring clients feel supported not only in compliance and reporting, but in their longer-term business and organisational goals.

iBase Client Testimonial - Warmun Art Centre

"At the Warmun Art Centre, having trusted partners is essential, especially when it comes to managing the financial side of our organisation. iBase Accounting has supported us through significant growth and change, and their role has been an important part of our journey.

As our operations have expanded and the amount of funding we've secured has tripled, so too have the demands on our systems and processes. iBase has provided consistent support, delivering thorough accounting, strong attention to detail, and a willingness to adapt to our evolving needs.

They've demonstrated flexibility and responsiveness to the varied and sometimes urgent demands that come with the dynamic nature of our work, and we appreciate their efforts to accommodate our requests as well as our evolving organisational needs and priorities.

We deeply value the relationship we've built with the iBase team.

Their professionalism, responsiveness, and commitment to our partnership have contributed to the stability and sustainability of our organisation, vision, and mission.

We look forward to continuing to strengthen this partnership into the future."

- Warmun Art Centre Team



Wunan Media

Wunan Media was established to amplify Indigenous voices and showcase the strengths, leadership and achievements of Aboriginal and Torres Strait Islander people, organisations and communities through the production of high-quality video and digital content. Wunan Media also creates employment and skills development opportunities in the media production industry for people across the East Kimberley.

Wunan Media at a glance (2025):

- **Location:** Kununurra, WA
- **Ownership:** Aboriginal-owned and operated
- **Focus:** Media production, digital storytelling and creative employment pathways
- **Media outputs produced in 2025:** 12
- **Sectors supported:** Employment, education, leadership, commercial enterprise, justice, health and community development
- **Registration:** Aboriginal Business Directory WA and Supply Nation Certified
- **Procurement:** Eligible for direct procurement by government agencies under threshold arrangements
- **Digital presence:** Dedicated website and online platforms launched

Based in Kununurra and working nationally, Wunan Media delivers culturally grounded storytelling across a range of sectors, supporting community organisations, government agencies and industry partners to share meaningful narratives with local, national and international audiences. Through strategic media production, Wunan Media contributes to stronger representation and visibility of Indigenous stories while supporting creative career pathways in the Kimberley.

In 2025, Wunan Media delivered projects across employment, education, justice, health and community development. This included career pathway videos, campaign development, documentary-style storytelling and place-based content supporting community-led initiatives.

Key projects delivered during 2025 included work with Job Pathways, the Department of Biodiversity, Conservation and Attractions, Kimberley Community Legal Services, the WA Indigenous Tourism Operators' Council, ANZ Bank, National Indigenous Australians Agency school attendance initiatives, and a range of Wunan programs including Life Choices, Financial Hub and Early Years pathways. Wunan Media also supported major place-based initiatives such as the Bedford Downs Stock Route Walk and Gur A Baradharaw Kod Sea and Land Council projects.

The IMPOWERED campaign marked a significant milestone for Wunan Media, bringing together storytelling across Wunan's programs and services to clearly communicate impact, connection and community-led change across the East Kimberley.

Wunan Media is registered on both the Aboriginal Business Directory WA and Supply Nation Indigenous Business Directory, strengthening procurement opportunities and enabling government agencies to directly engage Wunan Media for eligible services.

The launch of a dedicated website and social media presence enhanced accessibility and visibility of Wunan Media's work throughout the year.

Wunan Media's Us Without Abuse campaign proudly won Regional Media Campaign of the Year at the AdNews Agency of the Year Awards

Led by Wunan Media in partnership with respected Kimberley community leaders and organisations, the campaign amplifies the strength, courage and unity of local voices working together to end family violence. Grounded in community leadership and cultural authority, Us Without Abuse reflects the collective commitment across the East Kimberley to create safer families and stronger futures.

The campaign was developed in collaboration with Christine Robinson and Akira Boardman from Kimberley Community Legal Services Inc., and Emily Carter and David Couri from Marninwarntikura Women's Resource Centre, alongside a talented creative team including Troy Zafer, Andrew Tinning and Ross Tinney.

The award was announced at a national ceremony in Sydney.

To see Us Without Abuse recognised on a national stage is a powerful acknowledgment of the voices, stories and leadership that shaped it. This achievement not only celebrates creative excellence, but reinforces the importance of locally led, culturally grounded approaches to addressing family violence.

We are deeply proud of everyone involved and remain committed to strengthening the campaign's reach, influence and long-term impact across the region.



Property Development

In 2025, Wunan progressed its commercial property development agenda, with a focus on strengthening long-term housing outcomes and creating infrastructure that supports community, workforce and service delivery across the East Kimberley.

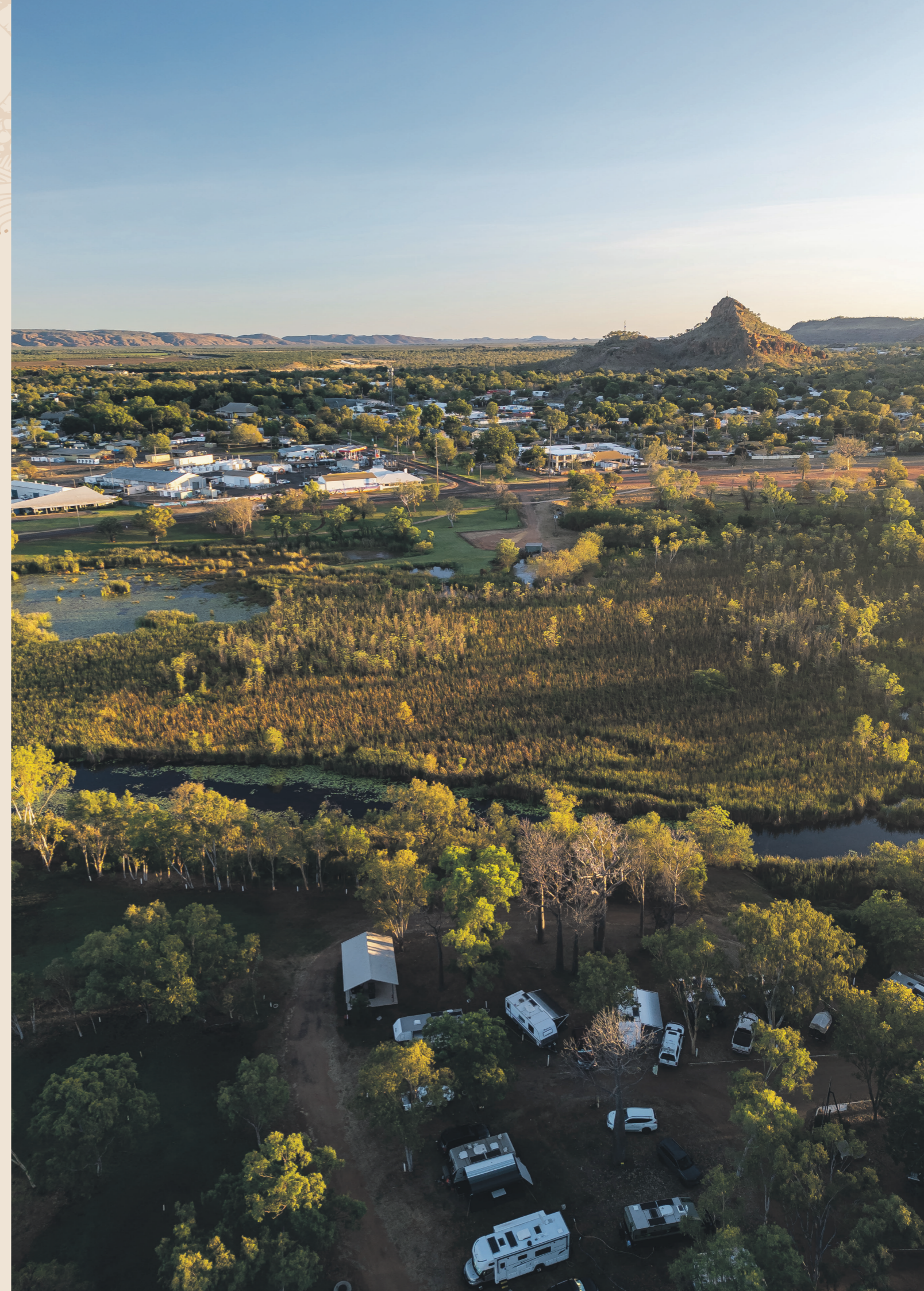
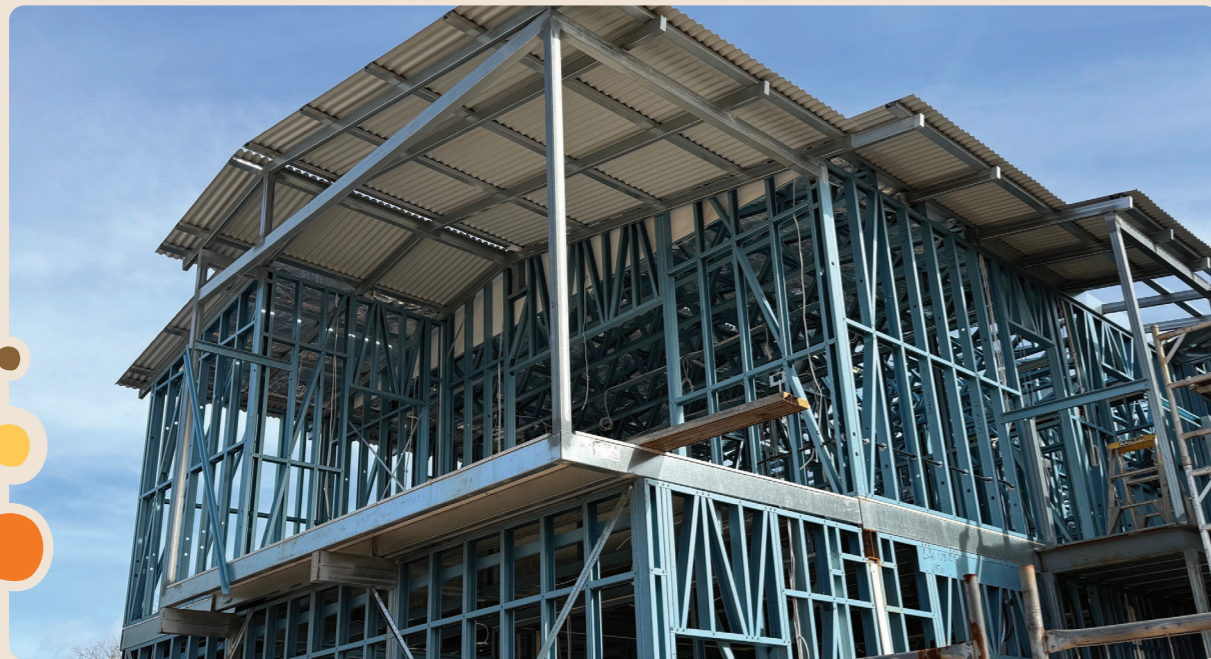
Early priorities identified by the Property Sub-Committee included progressing registration as a Community Housing Provider (CHP) and exploring opportunities to access future housing funding in partnership with Indigenous-led housing organisations. Consideration was also given to potential development opportunities in Wyndham and options to support Aboriginal land tenure and community housing outcomes.

To support this work, Wunan engaged specialist expertise to develop a Housing and Property Strategy, providing a structured framework to guide future investment, development and partnership decisions across housing and commercial property.

Construction activity continued during the year, including the commencement of a multi-unit residential development located at the rear of the Kununurra Withdrawal Intervention Centre site. This project represents an important step in expanding housing stock to support service delivery and workforce needs, with completion expected in the next reporting period.

Wunan also continued to pursue opportunities to develop a larger mixed-use precinct incorporating housing, commercial and community facilities. While funding outcomes were pending at the end of the reporting period, alternative pathways to progress staged development are being actively explored, including partnership approaches to support delivery of priority components.

Property development remains a key pillar of Wunan's commercial strategy, supporting sustainable growth, workforce attraction and retention, and long-term community benefit through Aboriginal-led development.



Partnerships



2025 Sponsorships



Emergency Services vs Clontarf Football Game (2025)



WUNAN FOUNDATION INC. AND CONTROLLED ENTITIES
ABN: 61 577 218 799

DIRECTORS' REPORT

The directors present their report together with the financial report of Wunan Foundation , (the "Foundation") and its controlled entities, (the "Group"), for the year ended 30 June 2025 and auditor's report thereon.

Directors names

The names of the directors in office at any time during or since the end of the year are:

Ian Trust (Chairman)

Michael Ashforth

Troy Zafer

Jean O'Reeri

Jeff Gooding

Lexie Trancollino

Jeremy Manning (Appointed 3 December 2025)

Philomena Hunter (Appointed 3 December 2025)

Late Tom Birch (Tenure ended 29 May 2025)

James Elliott (Resigned 18 November 2025)

The directors have been in office since the start of the year to the date of this report unless otherwise stated.

Results

The profit of the Group for the year amounted to \$9,760,035 (2024: \$715,949).

Significant changes in state of affairs

There were no significant changes in the Group's state of affairs that occurred during the financial year, other than those referred to elsewhere in this report.

Principal activities

The principal activity of the Group during the year was the use of Education, Employment and Accommodation to strengthen the success and socioeconomic independence of Aboriginal people and families in the East Kimberley region of Western Australia.

No significant change in the nature of these activities occurred during the year.

Signed on behalf of the Board of Directors.

Director: 
Ian Trust

Dated: 16th of December 2025



Pitcher Partners Sydney
ABN 17 795 780 962

Level 16, Tower 2 Darling Park
201 Sussex Street
Sydney NSW 2000

Postal address
GPO Box 1615
Sydney NSW 2001

+61 2 9221 2099
sydneypartners@pitcher.com.au

pitcher.com.au

**AUDITOR'S INDEPENDENCE DECLARATION
TO THE DIRECTORS OF WUNAN FOUNDATION INC
ABN: 61 577 218 799**

In accordance with section 60-40 of the *Australian Charities and Not-for-profits Commission Act 2012*, I declare to the best of my knowledge and belief in relation to the audit of the financial report of Wunan Foundation Inc for the year ended 30 June 2025, there have been:

- no contraventions of the auditor independence requirements of the *Australian Charities and Not-for-profits Commission Act 2012* in relation to the audit; and
- no contraventions of the ethical requirements of the Accounting Professional and Ethical Standards Board's APES 110 Code of Ethics for Professional Accountants (including Independence Standards) in relation to the audit.

This declaration is in respect of Wunan Foundation Inc and the entities it controlled during the year.



R M Shanley
Partner

Pitcher Partners
Sydney

16 December 2025

WUNAN FOUNDATION INC. AND CONTROLLED ENTITIES
ABN: 61 577 218 799

STATEMENTS OF PROFIT OR LOSS AND OTHER COMPREHENSIVE INCOME
FOR THE YEAR ENDED 30 JUNE 2025

	Note	Consolidated		Wunan Foundation	
		2025	2024	2025	2024
		\$	\$	\$	\$
Revenue and other income					
Revenue from contracts with customers	3	6,242,850	5,237,592	6,548,145	5,237,592
Other revenue and income	4	<u>26,730,660</u>	<u>16,072,856</u>	<u>24,505,730</u>	<u>15,758,868</u>
		<u>32,973,510</u>	<u>21,310,448</u>	<u>31,053,875</u>	<u>20,996,460</u>
Less: expenses					
Materials and consumables used		(990,148)	(764,156)	(990,148)	(764,156)
Depreciation and amortisation expense	5	(1,307,201)	(1,163,616)	(1,226,757)	(1,083,171)
Employee benefits expense	5	(11,659,465)	(10,309,412)	(11,659,465)	(10,309,412)
Occupancy and property related expenses		(764,035)	(721,130)	(764,035)	(721,130)
Repairs and maintenance expense		(1,269,046)	(590,320)	(1,328,341)	(590,320)
Advertising expense		(496,256)	(319,676)	(496,256)	(319,676)
Finance costs	5	(386,779)	(442,350)	(386,779)	(442,350)
Consultants		(2,033,999)	(2,102,917)	(2,033,999)	(2,102,917)
Travel expenses		(417,069)	(519,011)	(434,337)	(519,011)
Insurances		(307,846)	(322,777)	(286,236)	(298,027)
Subcontractors		(89,679)	(354,640)	(89,679)	(354,640)
Other expenses		<u>(4,061,531)</u>	<u>(2,777,452)</u>	<u>(4,348,165)</u>	<u>(2,547,937)</u>
		<u>(23,783,054)</u>	<u>(20,387,457)</u>	<u>(24,044,197)</u>	<u>(20,052,747)</u>
Share of net profits / (losses) of associates and joint ventures accounted for using the equity method		<u>569,579</u>	<u>(207,042)</u>	<u>569,579</u>	<u>(207,042)</u>
Profit before income tax expense		<u>9,760,035</u>	<u>715,949</u>	<u>7,579,257</u>	<u>736,671</u>
Other comprehensive income					
Revaluation of property, plant and equipment		(1,263,932)	-	(1,691,977)	-
Net change in fair value of financial assets designated at fair value through other comprehensive income		<u>(42,379)</u>	<u>(44,360)</u>	<u>(42,379)</u>	<u>(44,360)</u>
		<u>(1,306,311)</u>	<u>(44,360)</u>	<u>(1,734,356)</u>	<u>(44,360)</u>
Other comprehensive income for the year		<u>(1,306,311)</u>	<u>(44,360)</u>	<u>(1,734,356)</u>	<u>(44,360)</u>
Total comprehensive income		<u>8,453,724</u>	<u>671,589</u>	<u>5,844,901</u>	<u>692,311</u>

The accompanying notes form part of these financial statements.

- 3 -

WUNAN FOUNDATION INC. AND CONTROLLED ENTITIES
ABN: 61 577 218 799

STATEMENTS OF FINANCIAL POSITION
AS AT 30 JUNE 2025

	Note	Consolidated		Wunan Foundation	
		2025	2024	2025	2024
		\$	\$	\$	\$
Current assets					
Cash and cash equivalents	7	10,063,029	10,548,760	7,804,503	8,709,236
Receivables	8	3,255,771	2,359,275	4,875,883	2,152,893
Inventories	9	15,028	11,712	15,028	11,712
Other assets		<u>63,811</u>	<u>421,033</u>	<u>63,811</u>	<u>421,033</u>
Total current assets		<u>13,397,639</u>	<u>13,340,780</u>	<u>12,759,225</u>	<u>11,294,874</u>
Non-current assets					
Receivables	8	-	-	5,303,423	5,068,800
Other financial assets	10	6,064,021	7,093,230	7,717,456	8,339,658
Investments accounted for using equity method	11	10,200,482	9,630,904	10,200,482	9,630,904
Investment properties	13	5,650,000	3,553,068	-	-
Property, plant and equipment	12	<u>31,186,165</u>	<u>29,099,274</u>	<u>30,081,165</u>	<u>28,341,876</u>
Total non-current assets		<u>53,100,668</u>	<u>49,376,476</u>	<u>53,302,526</u>	<u>51,381,238</u>
Total assets		<u>66,498,307</u>	<u>62,717,256</u>	<u>66,061,751</u>	<u>62,676,112</u>
Current liabilities					
Payables	14	2,083,832	2,211,476	4,377,312	2,291,543
Borrowings	15	2,706,931	1,021,630	2,706,931	1,021,630
Provisions	16	1,076,761	1,031,319	1,076,761	1,031,319
Other liabilities	17	<u>9,040,096</u>	<u>12,614,048</u>	<u>9,040,096</u>	<u>12,614,048</u>
Total current liabilities		<u>14,907,620</u>	<u>16,878,473</u>	<u>17,201,100</u>	<u>16,958,540</u>
Non-current liabilities					
Borrowings	15	4,213,468	6,915,654	4,213,468	6,915,654
Provisions	16	<u>8,448</u>	<u>8,084</u>	<u>8,448</u>	<u>8,084</u>
Total non-current liabilities		<u>4,221,916</u>	<u>6,923,738</u>	<u>4,221,916</u>	<u>6,923,738</u>
Total liabilities		<u>19,129,536</u>	<u>23,802,211</u>	<u>21,423,016</u>	<u>23,882,278</u>
Net assets		<u>47,368,771</u>	<u>38,915,045</u>	<u>44,638,735</u>	<u>38,793,834</u>
Equity					
Reserves	18	5,589,530	6,969,222	4,727,451	6,535,188
Accumulated funds		<u>41,779,241</u>	<u>31,945,823</u>	<u>39,911,284</u>	<u>32,258,646</u>
Total equity		<u>47,368,771</u>	<u>38,915,045</u>	<u>44,638,735</u>	<u>38,793,834</u>

The accompanying notes form part of these financial statements.

- 4 -



wunan[®]
Choose your future



Kununurra (Head Office)

76 Coolibah Drive, PO Box 1338
Kununurra WA 6743, Australia
T: 08 9168 3881
F: 08 9169 2397
E: admin@wunan.org.au

Halls Creek

57 Thomas Street, PO Box 114
Halls Creek WA 6770, Australia
T: 08 9168 3881
T: 08 9168 5122
E: admin@wunan.org.au

www.wunan.org.au

